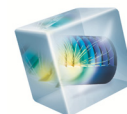


Fabrication of various carbon electrode arrays for enhancing electrochemical signals using redox cycling



Yeongjin Lim and Heungjoo Shin*

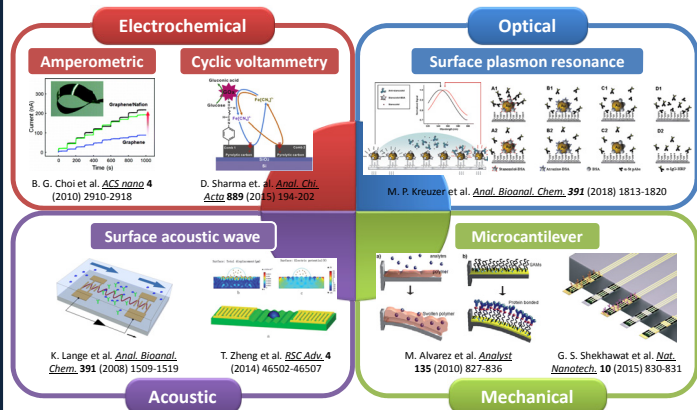
Department of Mechanical Engineering
Ulsan National Institute of Science & Technology (UNIST), Ulsan, Korea
<http://mnis.unist.ac.kr>



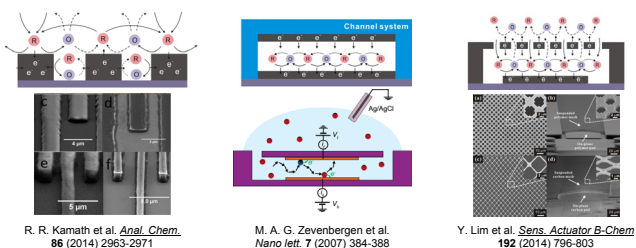
COMSOL
CONFERENCE
2015 SEOUL

Introduction

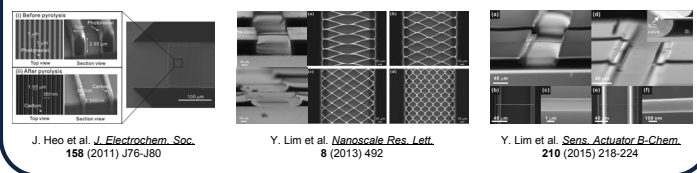
Sensing schemes commonly used in biosensors



Redox cycling based bio-sensing platforms



Carbon-MEMS



Computational Methods

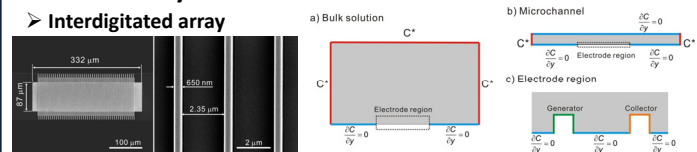
Simulation of concentration profiles (w/ redox cycling)

$$\frac{\partial C}{\partial t} = \nabla \cdot (D \nabla C)$$

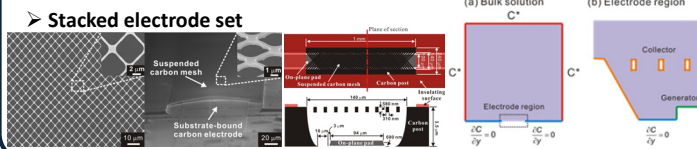
C : Concentration
D : Diffusivity of the redox species
for $\text{Fe}(\text{CN})_6^{4-}/\text{Fe}(\text{CN})_6^{3-}$ ($6.7 \times 10^{-6} \text{ cm}^2/\text{s}$)

Boundary conditions in the numerical simulation

Interdigitated array

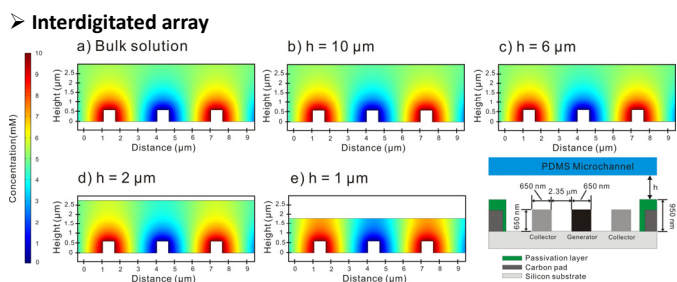


Stacked electrode set

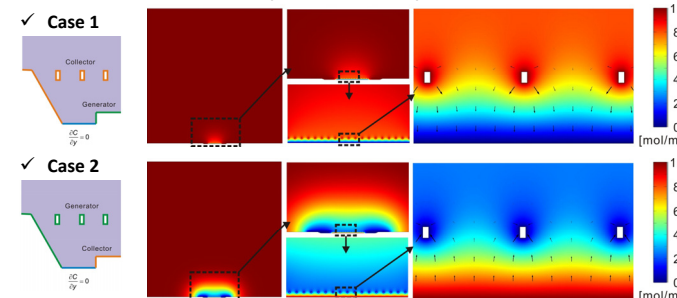


Results & Discussion

Concentration profiles at the nanoelectrodes

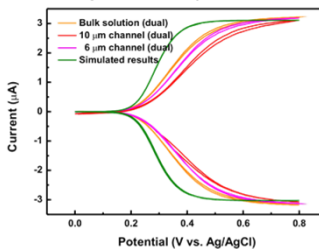


Stacked electrode set (Suspended mesh + planar electrode)

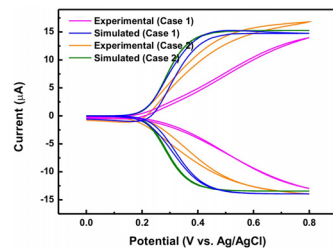


Cyclic voltammetry

Interdigitated array



Stacked electrode set



❖ A.F. : Amplification Factor
❖ C.E. : Collection Efficiency

Conclusion

- Development of carbon IDA nanoelectrode and stacked electrode set enabling the amplification of electrochemical current signals up to ~40 times.
- Good agreement between simulation and experimental results in the redox cycling effect.
- These carbon electrode arrays are expected to be utilized in various biosensor applications because of the high current amplification and simple fabrication methods.

Reference

- Jeong-II Heo, Yeongjin Lim and Heungjoo Shin, "The effect of channel height and electrode aspect ratio on redox cycling at carbon interdigitated array nanoelectrodes confined in a microchannel", *Analyst*, 138, 6404-6411 (2013).
- Yeongjin Lim, Jeong-II Heo, Heungjoo Shin, "Fabrication and application of a stacked carbon electrode set including a suspended mesh made of nanowires and a substrate-bound planar electrode toward for an electrochemical/biosensor platform", *Sens. Actuator B-chem.*, 192, 796-803 (2014)



Micro/Nano Integrated Systems Laboratory