



Coupled Fluid-Thermal-Structural Modeling of Motorized Spindle to Reduce Thermal Distortion

Mallinath N. Kaulagi¹ Srinivas N. Grama²
Ashok N. Badhe³ J. Sharana Basavaraja⁴

^{1,4}B. M. S. College of Engineering, Bengaluru, KA, India

^{2,3}Dr. Kalam center for innovation, Bharat Fritz Werner Ltd., Bengaluru, KA, India

Comsol Conference-2018, Bengaluru

COMSOL
CONFERENCE
2018 BANGALORE



Outline

Introduction

- Need for built-in motor spindle
- Problem definition and objectives

Heat characterization by inverse techniques

- Boundary conditions
- Methodology
- Heat source estimation

Structural analysis

- Coupled fluid-thermal-structural analysis



Outline

Introduction

- Need for built-in motor spindle
- Problem definition and objectives

Heat characterization by inverse techniques

- Boundary conditions
- Methodology
- Heat source estimation

Structural analysis

- Coupled fluid-thermal-structural analysis



Motorized spindle reduces transmission loss but compounds thermal effects

- ▶ Manufacturing industries - aiming at reducing production time and increasing productivity
- ▶ Conventional spindles (power transmission loss) are replaced by motorized spindle
- ▶ Thermal issues in motorized spindle because of built-in motor
- ▶ Needs external cooling to reduce thermal issues



Motorized spindle reduces transmission loss but compounds thermal effects

- ▶ Manufacturing industries - aiming at reducing production time and increasing productivity
- ▶ Conventional spindles (power transmission loss) are replaced by motorized spindle
- ▶ Thermal issues in motorized spindle because of built-in motor
- ▶ Needs external cooling to reduce thermal issues



Motorized spindle reduces transmission loss but compounds thermal effects

- ▶ Manufacturing industries - aiming at reducing production time and increasing productivity
- ▶ Conventional spindles (power transmission loss) are replaced by motorized spindle
- ▶ Thermal issues in motorized spindle because of built-in motor
- ▶ Needs external cooling to reduce thermal issues



Motorized spindle reduces transmission loss but compounds thermal effects

- ▶ Manufacturing industries - aiming at reducing production time and increasing productivity
- ▶ Conventional spindles (power transmission loss) are replaced by motorized spindle
- ▶ Thermal issues in motorized spindle because of built-in motor
- ▶ Needs external cooling to reduce thermal issues



The problem statement is two fold: heat characterization and spindle coolant channel optimization

The aim of present work is to

- ▶ Estimate heat generation rate of motorized spindle in an experimental-numerical framework.
- ▶ Analyze the motorized spindle in coupled fluid-thermal-structural simulation framework and optimize the coolant flow channel for minimizing the thermal distortion



The problem statement is two fold: heat characterization and spindle coolant channel optimization

The aim of present work is to

- ▶ Estimate heat generation rate of motorized spindle in an experimental-numerical framework.
- ▶ Analyze the motorized spindle in coupled fluid-thermal-structural simulation framework and optimize the coolant flow channel for minimizing the thermal distortion

Outline

Introduction

- Need for built-in motor spindle
- Problem definition and objectives

Heat characterization by inverse techniques

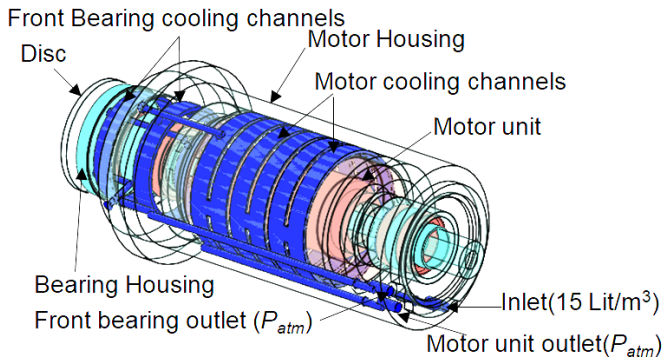
- Boundary conditions
- Methodology
- Heat source estimation

Structural analysis

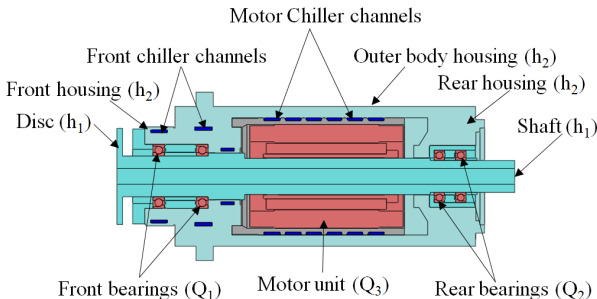
- Coupled fluid-thermal-structural analysis

External forced Coolant flow channel is used to reduce the temperature of spindle

Navier-stokes equation is used for fluid model



Inverse Algorithm Validation for Spindle problem



Knowing sensor point temperature (T_i) and initial guess value (Q_i) Inverse Methodology is used to estimate Heat sources

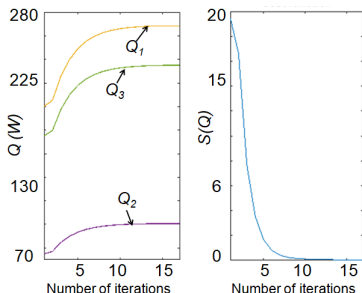
T_1 , T_2 are outer race temperature of front & rear bearing,
 T_3 is motor surface temperature



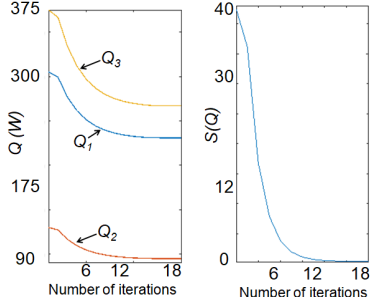
Solution converges to true value

Levenberg Marquadt Method: Irrespective of initial guess value, solution is converging towards true value with maximum error of 7.64%

True heat sources $Q_1=250W$ $Q_2=100W$ $Q_3=250W$



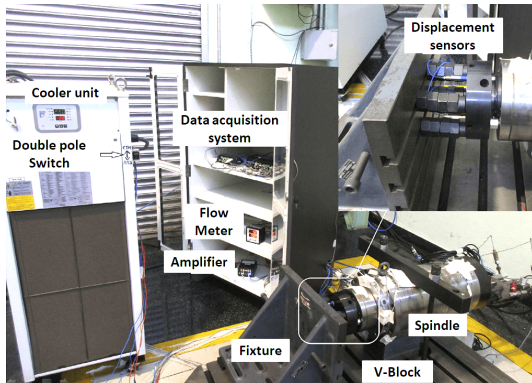
Lower initial guess value



Higher initial guess value



Actual experimental setup [2]



[2] Grama et al, IJMTM, 132, 3–16 (2018)



Heat generation rate from spindle unit are estimated under steady state condition

Based on experimental temperature heat sources are estimated

4,500 rpm	15,000 rpm
$Q_1 = 111.28 \text{ W}$	$Q_1 = 238.44 \text{ W}$
$Q_2 = 37.1 \text{ W}$	$Q_2 = 125.96 \text{ W}$
$Q_3 = 66.76 \text{ W}$	$Q_3 = 132.69 \text{ W}$

Higher heat generation is observed for higher spindle speed.

Outline

Introduction

- Need for built-in motor spindle
- Problem definition and objectives

Heat characterization by inverse techniques

- Boundary conditions
- Methodology
- Heat source estimation

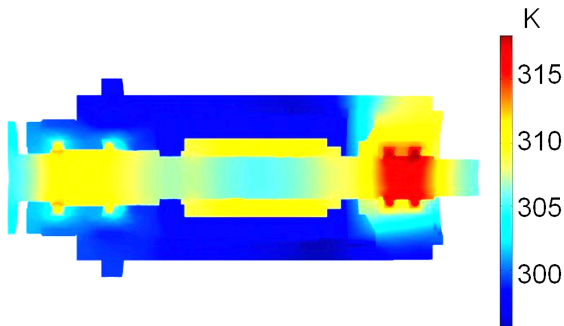
Structural analysis

- Coupled fluid-thermal-structural analysis



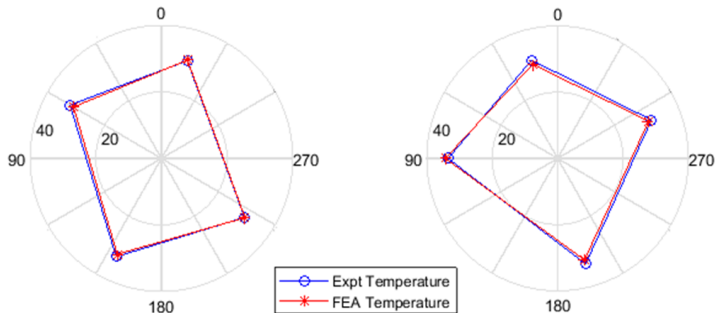
Higher temperature is observed near rear bearing as it is not cooled

Temperature distribution of motorized spindle at 15,000 rpm





Coupled fluid-thermal analysis of spindle is validated from experimental temperatures measured near front bearing

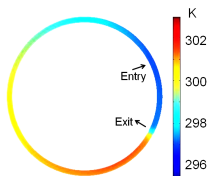
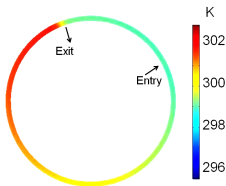
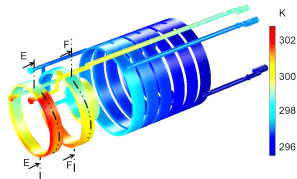




Non uniform temperature distribution observed in current fluid channel at front bearing region

Spindle and coolant channel analysed using COMSOL multi-physics

Maximum temperature variation across sections E-E and F-F for current spindle design is 2.98°C & 4.26°C

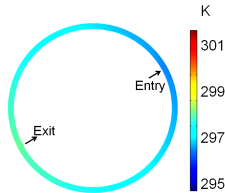
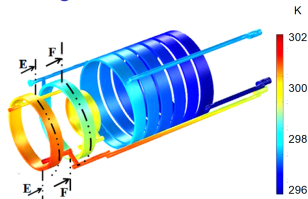




Optimization of coolant channel leads to almost uniform temperature distribution near front bearings

The coolant entry and exit angles near the front bearings are made diametrically opposite

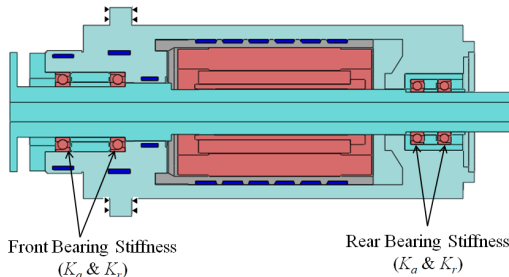
Maximum temperature variation across sections E-E and F-F for optimized spindle is 0.87°C & 1.4°C





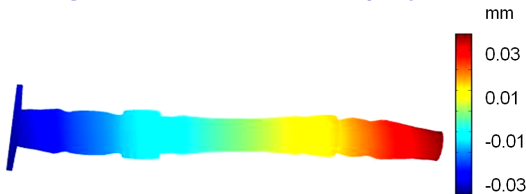
Boundary condition for structural analysis are provided through bearing stiffness and fixing collar of housing

For current preload condition, radial stiffness is twice that of axial stiffness [1]



For front & rear bearings, $K_a=146.7 \times 10^6$ & 121.6×10^6 N/m respectively, for 25° contact angle, $K_r=2 \times K_a$
[1] FAG manual, Schaeffler technologies (2010)

Optimized spindle shows reduced angular distortion through analysing coupled fluid-thermal-structural framework using COMSOL multi-physics



Distortion	Current spindle	Optimized spindle
Axial (μm)	26.49	25.44
Angular (μrad)	12.8	3.23

Outline

Introduction

- Need for built-in motor spindle
- Problem definition and objectives

Heat characterization by inverse techniques

- Boundary conditions
- Methodology
- Heat source estimation

Structural analysis

- Coupled fluid-thermal-structural analysis

Summary

- ▶ Heat generation characterization using Levenberg-Marquardt method.
- ▶ Non-uniform temperature distribution near front bearings has been reduced from 2.5°C to around 1°C by coolant channel optimization.
- ▶ Spindle angular deformation is reduced from 12.8 to 3.23 μrad in the optimized design.

Summary

- ▶ Heat generation characterization using Levenberg-Marquardt method.
- ▶ Non-uniform temperature distribution near front bearings has been reduced from 2.5°C to around 1°C by coolant channel optimization.
- ▶ Spindle angular deformation is reduced from 12.8 to 3.23 μrad in the optimized design.

Summary





- ▶ Heat generation characterization using Levenberg-Marquardt method.
- ▶ Non-uniform temperature distribution near front bearings has been reduced from 2.5°C to around 1°C by coolant channel optimization.
- ▶ Spindle angular deformation is reduced from 12.8 to $3.23\mu\text{rad}$ in the optimized design.







Acknowledgements:

The authors like to thank Bharat Fritz Werner Limited, Bengaluru, for valuable support to conduct the above work and providing all the required lab facilities.

References:

-  FAG manual, Axial angular contact ball bearings, Schaeffler Technologies GmbH & Co. KG (2010)
-  Grama et al, A model-based cooling strategy for motorized spindle to reduce thermal errors, IJMTM, 132, 3-16 (2018)
-  M Necat Ozisik, Inverse heat transfer: fundamentals and applications, CRC Press (2000)
-  G.G. Raghavendra, Heat Generation Characterization of Motorized Spindle using inverse Method, M.Tech.Thesis, VTU (2017)

References:

-  FAG manual, Axial angular contact ball bearings, Schaeffler Technologies GmbH & Co. KG (2010)
-  Grama et al, A model-based cooling strategy for motorized spindle to reduce thermal errors, IJMTM, 132, 3-16 (2018)
-  M Necat Ozisik, Inverse heat transfer: fundamentals and applications, CRC Press (2000)
-  G.G. Raghavendra, Heat Generation Characterization of Motorized Spindle using inverse Method, M.Tech.Thesis, VTU (2017)



Thank you for your attention

Outline

Additional Material

Iterative Steps involved in LMM

- ▶ Direct heat transfer:-analyse the model with initial guess value $Q^T = [Q_1, Q_2, Q_3]$ are vector of unknown parameter
- ▶ Objective function, $S(Q) = \sum_{i=1}^M [T_{estimated} - T_{experimental}]^2$
- ▶ Sensitivity matrix, $J(Q) = \left[\frac{\partial T^T(Q)}{\partial Q} \right]$
- ▶ The ΔQ for Levenberg-Marquadt method is calculated by

$$[(J^k)^T \times J^k + \mu^k \times \Omega^k] \times \Delta Q^k = (J^k)^T \times [T_{experimental} - T_{estimated}(Q^k)]$$

where k represent iteration. μ^k =damping parameter,
 ρ^k =diagonal matrix

▶ New value of parameter, $Q^{k+1} = Q^k + \Delta Q^k$

Iterative Steps involved in LMM

- ▶ Direct heat transfer:-analyse the model with initial guess value $Q^T = [Q_1, Q_2, Q_3]$ are vector of unknown parameter
- ▶ Objective function, $S(Q) = \sum_{i=1}^M [T_{estimated} - T_{experimental}]^2$
- ▶ Sensitivity matrix, $J(Q) = \left[\frac{\partial T^T(Q)}{\partial Q} \right]$
- ▶ The ΔQ for Levenberg-Marquadt method is calculated by

$$[(J^k)^T \times J^k + \mu^k \times \Omega^k] \times \Delta Q^k = (J^k)^T \times [T_{experimental} - T_{estimated}(Q^k)]$$
 where k represent iteration. μ^k =damping parameter,
 ρ^k =diagonal matrix
- ▶ New value of parameter, $Q^{k+1} = Q^k + \Delta Q^k$

Iterative Steps involved in LMM

- ▶ Direct heat transfer:-analyse the model with initial guess value $Q^T = [Q_1, Q_2, Q_3]$ are vector of unknown parameter
- ▶ Objective function, $S(Q) = \sum_{i=1}^M [T_{estimated} - T_{experimental}]^2$
- ▶ Sensitivity matrix, $J(Q) = \left[\frac{\partial T^T(Q)}{\partial Q} \right]$
- ▶ The ΔQ for Levenberg-Marquadt method is calculated by

$$[(J^k)^T \times J^k + \mu^k \times \Omega^k] \times \Delta Q^k = (J^k)^T \times [T_{experimental} - T_{estimated}(Q^k)]$$
 where k represent iteration. μ^k =damping parameter,
 ρ^k =diagonal matrix
- ▶ New value of parameter, $Q^{k+1} = Q^k + \Delta Q^k$

Iterative Steps involved in LMM

- ▶ Direct heat transfer:-analyse the model with initial guess value $Q^T = [Q_1, Q_2, Q_3]$ are vector of unknown parameter
- ▶ Objective function, $S(Q) = \sum_{i=1}^M [T_{estimated} - T_{experimental}]^2$
- ▶ Sensitivity matrix, $J(Q) = \left[\frac{\partial T^T(Q)}{\partial Q} \right]$
- ▶ The ΔQ for Levenberg-Marquadt method is calculated by

$$[(J^k)^T \times J^k + \mu^k \times \Omega^k] \times \Delta Q^k = (J^k)^T \times [T_{experimental} - T_{estimated}(Q^k)]$$

where k represent iteration. μ^k =damping parameter,
 ρ^k =diagonal matrix

New value of parameter, $Q^{k+1} = Q^k + \Delta Q^k$

Iterative Steps involved in LMM

- ▶ Direct heat transfer:-analyse the model with initial guess value $Q^T = [Q_1, Q_2, Q_3]$ are vector of unknown parameter
- ▶ Objective function, $S(Q) = \sum_{i=1}^M [T_{estimated} - T_{experimental}]^2$
- ▶ Sensitivity matrix, $J(Q) = \left[\frac{\partial T^T(Q)}{\partial Q} \right]$
- ▶ The ΔQ for Levenberg-Marquadt method is calculated by

$$[(J^k)^T \times J^k + \mu^k \times \Omega^k] \times \Delta Q^k = (J^k)^T \times [T_{experimental} - T_{estimated}(Q^k)]$$

where k represent iteration. μ^k =damping parameter,
 ρ^k =diagonal matrix

New value of parameter, $Q^{k+1} = Q^k + \Delta Q^k$

Boundary conditions

Fourier law of heat conduction is used for solid heat transfer problem

- ▶ The three dimensional governing equation for steady state heat transfer

$$\frac{\partial}{\partial x} \left[\frac{\partial T}{\partial x} \right] + \frac{\partial}{\partial y} \left[\frac{\partial T}{\partial y} \right] + \frac{\partial}{\partial z} \left[\frac{\partial T}{\partial z} \right] + \frac{Q_1}{k} + \frac{Q_2}{k} + \frac{Q_3}{k} = 0$$

Q_1, Q_2, Q_3 are heat generation at front bearing, rear bearing and motor respectively.

- ▶ heat transfer at contact interference (Q_c)

$$Q_c = C \times (A \times \Delta T)$$

C = Thermal contact conductance, A = Contact area,
 ΔT = Temperature drop at the contact interface

Boundary conditions

Fourier law of heat conduction is used for solid heat transfer problem

- ▶ The three dimensional governing equation for steady state heat transfer

$$\frac{\partial}{\partial x} \left[\frac{\partial T}{\partial x} \right] + \frac{\partial}{\partial y} \left[\frac{\partial T}{\partial y} \right] + \frac{\partial}{\partial z} \left[\frac{\partial T}{\partial z} \right] + \frac{Q_1}{k} + \frac{Q_2}{k} + \frac{Q_3}{k} = 0$$

Q_1, Q_2, Q_3 are heat generation at front bearing, rear bearing and motor respectively.

- ▶ heat transfer at contact interference (Q_c)

$$Q_c = C \times (A \times \Delta T)$$

C = Thermal contact conductance, A = Contact area,
 ΔT = Temperature drop at the contact interface

Boundary conditions

Fourier law of heat conduction is used for solid heat transfer problem

- ▶ Convection heat transfer (Q_{out}) equation is

$$Q_{out} = h \times (T(x, y, z) - T_{\infty})$$

Q_{out} = Heat dissipation due to convection,

h = Convective heat transfer coefficient,

$T(x, y, z)$ = Temperature of spindle,

T_{∞} = Surrounding temperature

- ▶ Radiation heat dissipation is neglected in the analysis

Boundary conditions

Fourier law of heat conduction is used for solid heat transfer problem

- ▶ Convection heat transfer (Q_{out}) equation is

$$Q_{out} = h \times (T(x, y, z) - T_{\infty})$$

Q_{out} = Heat dissipation due to convection,

h = Convective heat transfer coefficient,

$T(x, y, z)$ = Temperature of spindle,

T_{∞} = Surrounding temperature

- ▶ Radiation heat dissipation is neglected in the analysis