

Hydro-mechanical modelling of gas migration in host rocks for nuclear waste repositories

Jianxiong Yang, Mamadou Fall

Presented by: Jianxiong Yang

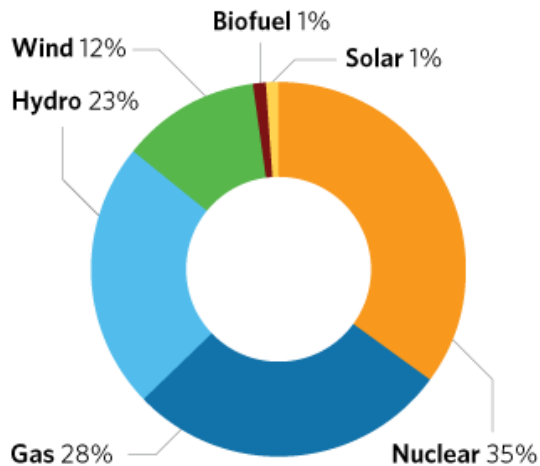


Outline

1. Introduction
2. Double porosity approach
3. Governing equations
4. Model validation
5. Conclusions

Introduction

➤ Nuclear power



Nuclear	13,009 MW or 35%
Gas/Oil	10,277 MW or 28%
Hydro	8,499 MW or 23%
Wind	4,486 MW or 12%
Biofuel	295 MW or 1%
Solar	424 MW or 1%

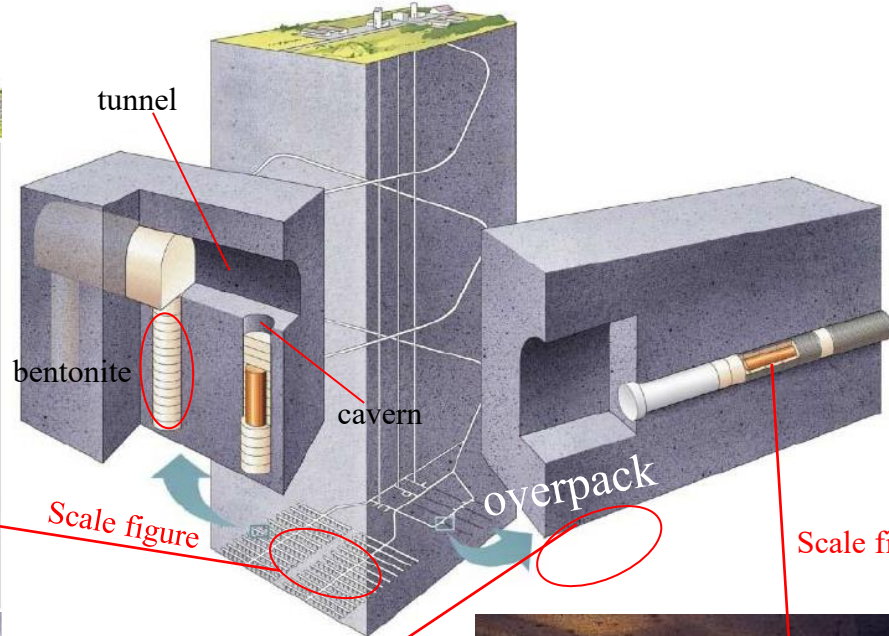
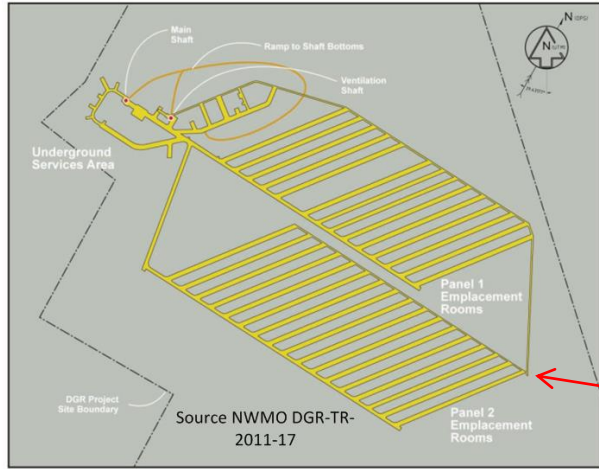


Current installed energy capacity in Ontario (from 18-Months Outlook)

➤ Nuclear waste disposal

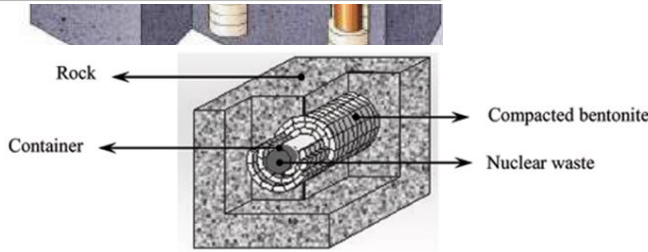
Waste types	Option	Examples
LLW and short-lived ILW	Near-surface disposal, or in caverns below ground level (at depths of tens of meters)	Implemented in Finland and Sweden.
Long-lived ILW and HLW	Deep geological repository (DGR) at depths 250-1000 m, or deeper boreholes	DGR is being investigated or constructed.

The concept of DGR

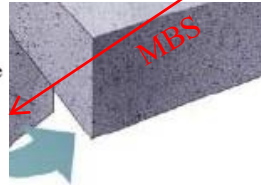


Scale figure

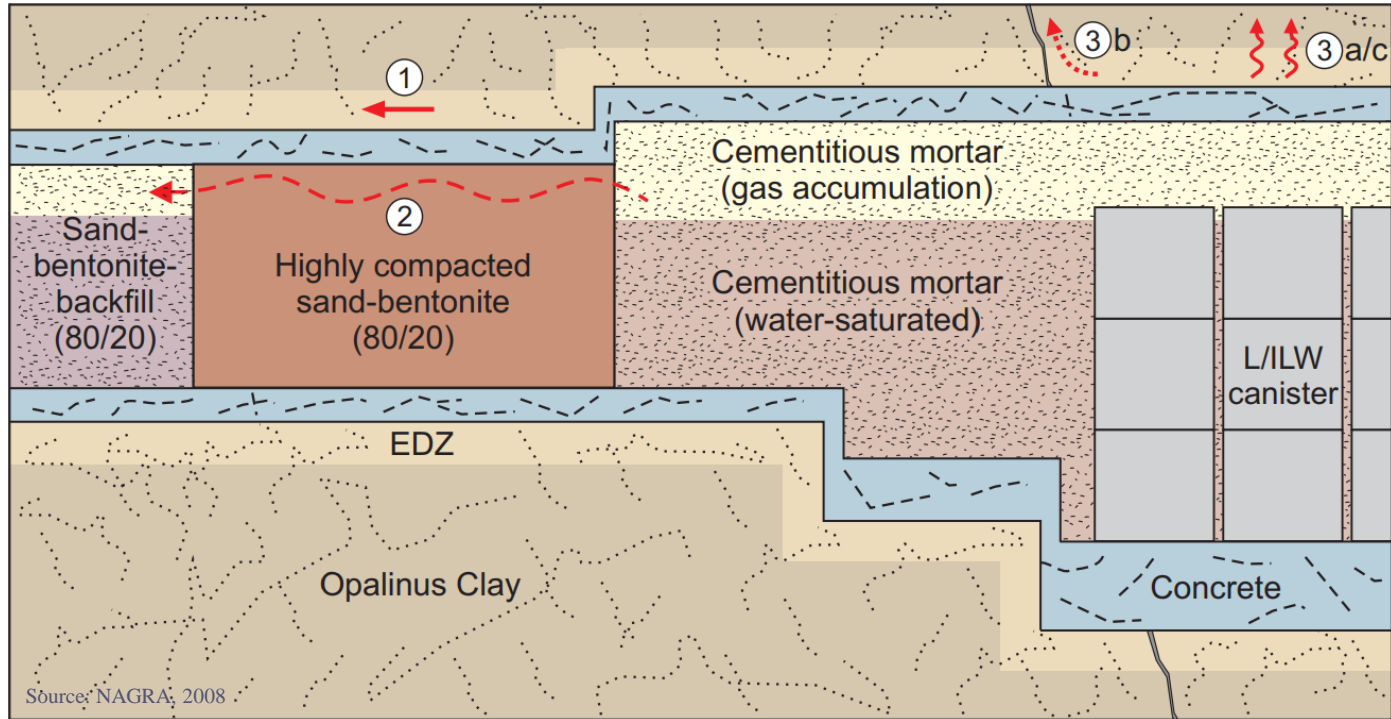
Scale figure



Source: Sanchez,2005

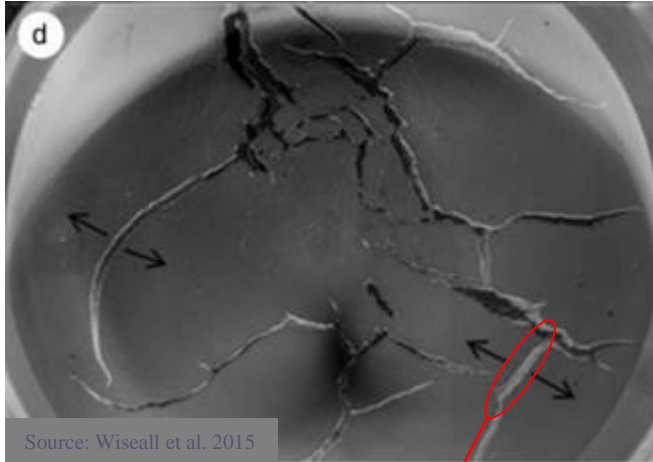


➤ Gas pathways



Gas pathways: ①EDZ; ②sealing material; ③host rock: [a] pores [b] existing fractures [c]induced fractures

➤ Research status



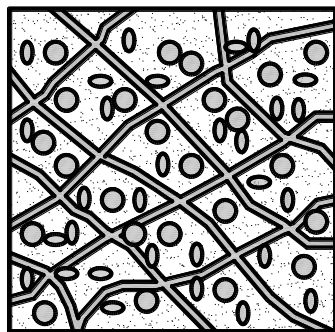
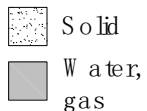
Gas induced fracturing

Numerical consideration:

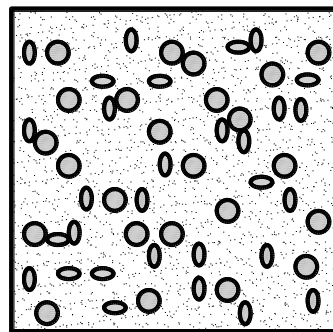
- Hydro-mechanical coupled process
- Unsaturated fluid flow
- Fractures contained in the rock

Double porosity approach

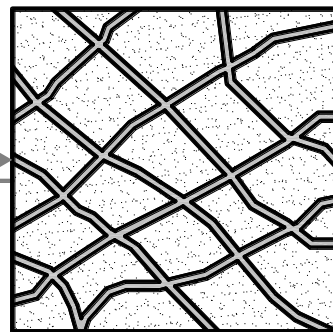
Elementary volume representation



FPM with double porosity



Porous continuum (PC)



Fractured continuum (FC)

Source: Zhang et al. 2003

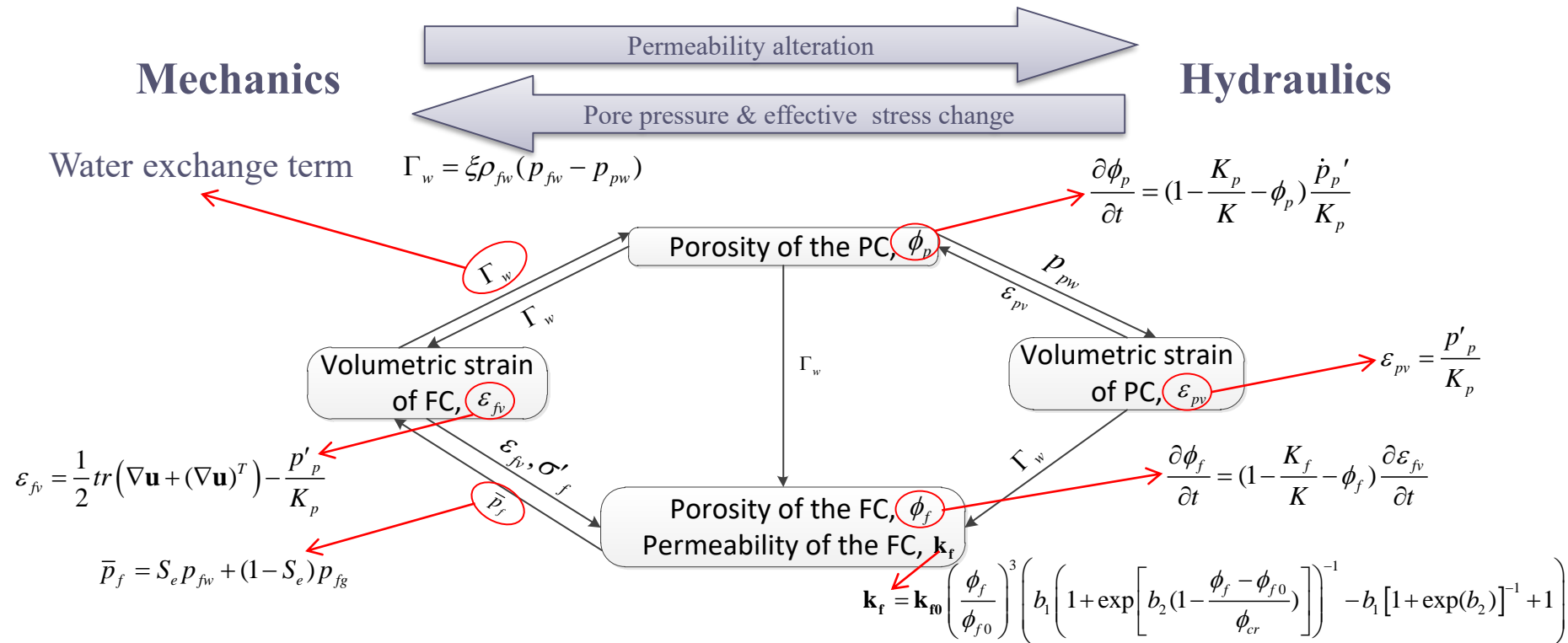
Volume:	V_t	=	$V_{s(p)} + V_p$	=	$V_{s(f)} + V_f$
Bulk modulus:	$\frac{1}{K}$	=	$\frac{1}{K_p}$	+	$\frac{1}{K_f}$
Shear modulus:	$\frac{1}{G}$	=	$\frac{1}{G_p}$	+	$\frac{1}{G_f}$
Porosity:			$\phi_p = V_p / V_t$		$\phi_f = V_f / V_t$

➤ Main assumptions

- ① Two phase flow takes place in the FC only.
- ② The PC is kept fully saturated.
- ③ The PC and FC are subjected to the same total stress.
- ④ Fluid flow in each subcontinuum is independent.
- ⑤ PC is assumed to be volumetrically elastic, FC shows linear elastic behavior.

Coupled variables

Primary variables: p_{fg} , p_{fw} , p_{pw} , \mathbf{u} , ϕ_p , ϕ_f



Governing equations

➤ Mass balance equations

$$\text{FC} \left\{ \begin{array}{l} \rho_{fg} \left(\frac{\phi_f (1 - S_e) M}{\rho_{fg} RT} + \phi_f C_s \right) \frac{\partial p_{fg}}{\partial t} + \nabla \cdot (\rho_{fg} \mathbf{v}_{fg}^D) = \rho_{fg} \phi_f C_s \frac{\partial p_{fw}}{\partial t} - \rho_{fg} (1 - S_e) \left(1 - \frac{K_f}{K}\right) \frac{\partial \varepsilon_{fv}}{\partial t} \\ \rho_{fw} (\phi_f S_e \chi_w + \phi_f C_s) \frac{\partial p_{fw}}{\partial t} + \nabla \cdot (\rho_{fw} \mathbf{v}_{fw}^D) = \rho_{fw} \phi_f C_s \frac{\partial p_{fg}}{\partial t} - \rho_{fw} S_e \left(1 - \frac{K_f}{K}\right) \frac{\partial \varepsilon_{fv}}{\partial t} + \xi \rho_{fw} (p_{fw} - p_{pw}) \end{array} \right.$$

$$\text{PC} \quad \rho_{pw} \phi_p \chi_w \frac{\partial p_{pw}}{\partial t} = -\rho_{pw} \left(1 - \frac{K_p}{K}\right) \frac{\dot{p}_p'}{K_p} - \xi \rho_{fw} (p_{fw} - p_{pw})$$

➤ Momentum balance equation

$$\nabla \cdot \dot{\boldsymbol{\sigma}} + \dot{\rho} \mathbf{g} = 0, \quad \rho = (1 - \phi_f - \phi_p) \rho_s + (\phi_f S_e + \phi_p) \rho_w + \phi_f (1 - S_e) \rho_g$$

➤ Constitutive equations

Mechanical relation

$$\square_f : \left(\boldsymbol{\varepsilon} - \frac{1}{3} \frac{p_p'}{K_p} \mathbf{I} \right) = \boldsymbol{\sigma} + \left(1 - \frac{K_f}{K} \right) [S_e p_{fw} + (1 - S_e) p_{fg}] \mathbf{I}$$

Hydraulic relation

$$\mathbf{v}_{f\pi}^D = - \frac{\mathbf{k}_f k_{r\pi}}{\mu_\pi} (\nabla p_{f\pi} - \rho_\pi \mathbf{g}) \quad \pi = g, w \quad \longrightarrow \quad \text{Darcy's law}$$

$$p_c = p_{fg} - p_{fw}$$

$$S_e = \begin{cases} \left[1 + \left(\frac{p_c}{p_{gev}} \right)^{1-m} \right]^{-m} & p_c > 0 \\ 1 & p_c \leq 0 \end{cases}$$

$$k_{rw} = \sqrt{S_e} [1 - (1 - S_e)^{1/m}]^2$$

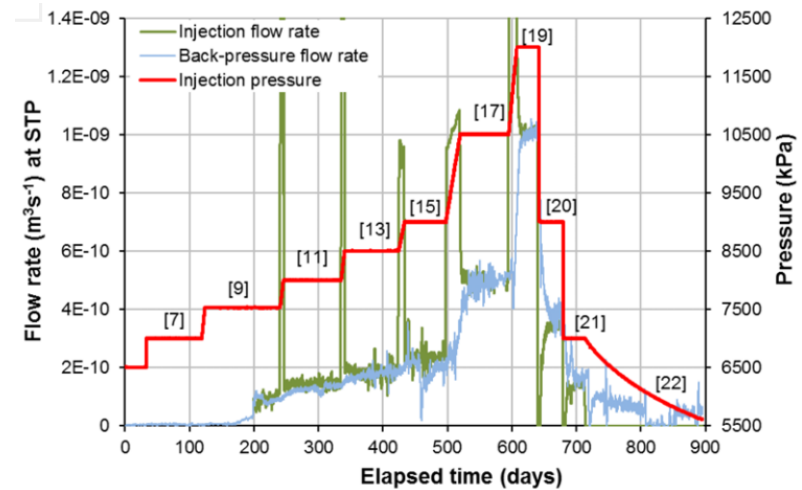
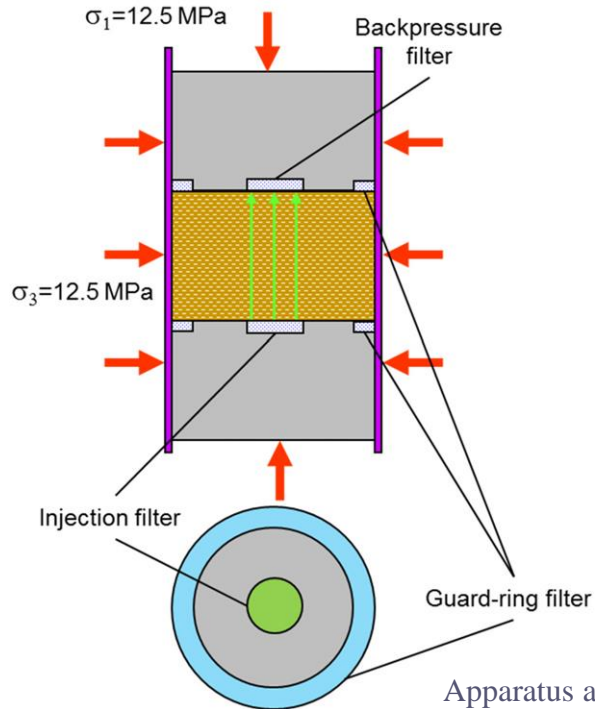
$$k_{rg} = (1 - S_e)^3$$

Capillary model

Relative permeability

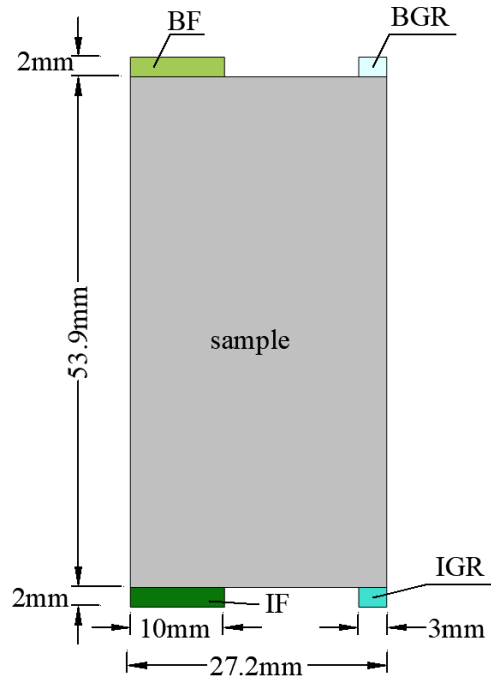
Model validation

➤ Gas injection test



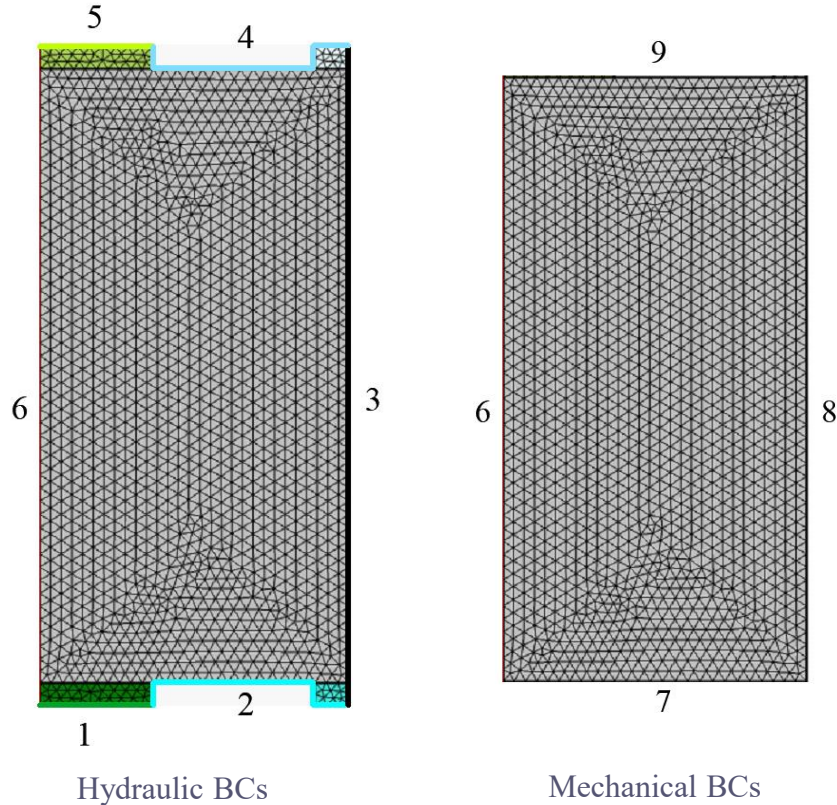
Apparatus and results (from Harrington et al. 2017)

➤ Model parameters



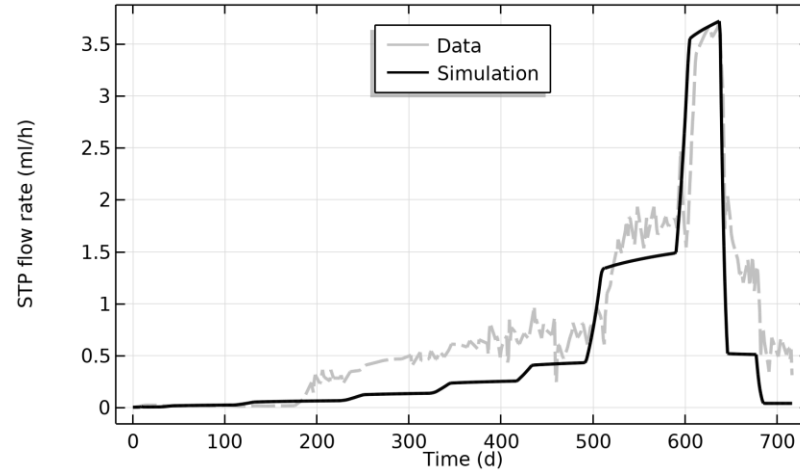
ρ_s , g/cm ³	2.31	G, MPa	769
ϕ_{f0}	0.04	K_p , MPa	1667
ϕ_{p0}	0.11	K_f , MPa	1500
S_{e0}	97%	b_1	72
$k_{f0//}$, m ²	3.5×10^{-19}	b_2	1
$k_{f0\perp}$, m ²	1.4×10^{-20}	ϕ_{cr}	0.0014
P_{gev} , MPa	1	ξ , m*s/kg	3×10^{-13}
m	1/3		

Boundary conditions

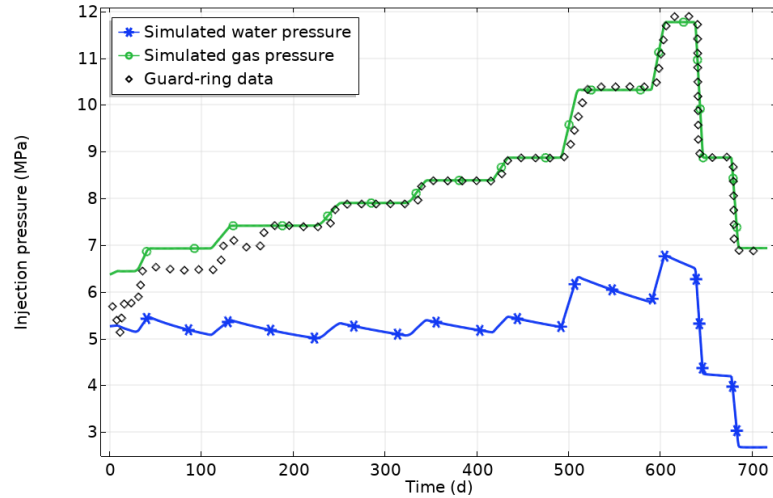


BC No.	Hydraulic BCs			Mechanical BCs
	Gas in FC	Water in FC	Water in PC	
1	Applied	No flow	No flow	-
2	No flow	No flow	No flow	-
3	No flow	No flow	No flow	-
4	No flow	No flow	No flow	-
5	4.71 MPa	4.5 MPa	No flow	-
6	Axisymmetric			-
7	-	-	-	Roller
8	-	-	-	12.5 MPa
9	-	-	-	12.5 MPa

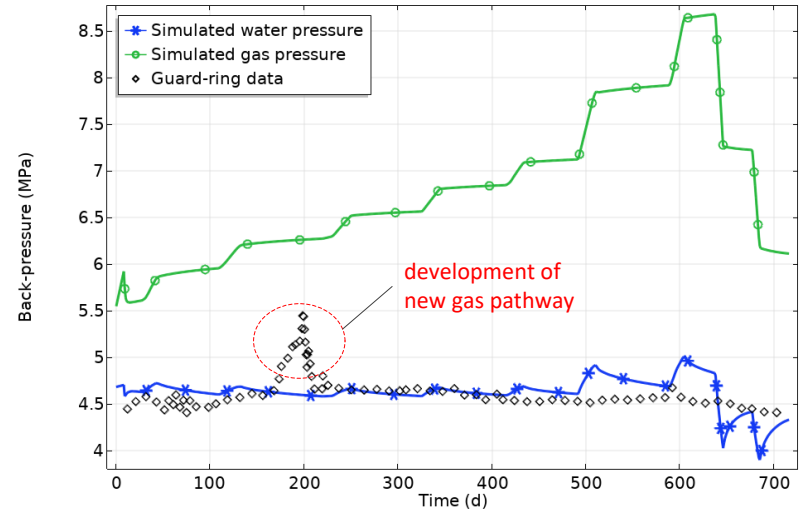
➤ Simulated results



Simulated results



Pressure in the IGR



Pressure in the BGR

Conclusions

- To capture the experimental observations of gas induced fracturing, the conventional HM model with single porosity is unsuitable to be used.
- The new developed model with double porosity shows good results compared with the experimental data.
- Further improvements can be made by introducing a 3D model with a non-symmetrical geometry and heterogeneous HM properties.

References

- [1] P. Marschall, T. Gimmi, S. Horseman, Characterisation of Gas Transport Properties of the Opalinus Clay, a potential host rock formation for radioactive waste disposal, *Science And Technology*, **60**, 121–139 (2005).
- [2] J.F.F. Harrington, R. de la Vaissière, D.J.J. Noy, R.J.J. Cuss, J. Talandier, Gas flow in Callovo-Oxfordian claystone (COx): Results from laboratory and field-scale measurements, *Mineralogical Magazine*, **76**, 3303–3318 (2012).
- [3] M. Fall, O. Nasir, T.S. Nguyen, A coupled hydro-mechanical model for simulation of gas migration in host sedimentary rocks for nuclear waste repositories, *Engineering Geology*, **176**, 24–44 (2014).
- [4] E.C. Aifantis, Introducing a multi-porous medium, *Dev. Mech*, **8**, 209–211 (1977).
- [5] S. Valliappan, N. Khalili-Naghadeh, Flow through fissured porous media with deformable matrix, *International Journal for Numerical Methods in Engineering*, **29**, 1079–1094 (1990).
- [6] D. Elsworth, M. Bai, Flow-Deformation response of dual-porosity media, *Journal of Geotechnical Engineering*, **118**, 107–124 (1992).
- [7] R. Nair, Y. Abousleiman, M. Zaman, A finite element porothermoelastic model for dual-porosity media, *International Journal for Numerical and Analytical Methods in Geomechanics*, **28**, 875–898 (2004).
- [8] Y. Abousleiman, V. Nguyen, Poromechanics response of inclined wellbore geometry in fractured porous media, *Journal of Engineering Mechanics*, **131**, 1170–1183 (2005).
- [9] R. Nair, Y. Abousleiman, M. Zaman, Modeling fully coupled oil-gas flow in a dual-porosity medium, *International Journal of Geomechanics*, **5**, 326–338 (2005).
- [10] J. Zhang, M. Bai, J.-C. Roegiers, Dual-porosity poroelastic analyses of wellbore stability, *International Journal of Rock Mechanics and Mining Sciences*, **40**, 473–483 (2003).
- [11] Y. Mualem, A new model for predicting the hydraulic conductivity of unsaturated porous media, *Water Resources Research*, **12**, 513–522 (1976).
- [12] M.T. van Genuchten, A closed-form equation for predicting the hydraulic conductivity of unsaturated soils, *Soil Science Society of America Journal*, **44**, 892–898 (1980).
- [13] J.F. Harrington, R.J. Cuss, J. Talandier, Gas transport properties through intact and fractured Callovo-Oxfordian mudstones, *Geological Society Special Publication*, **454**, 131–154 (2017).
- [14] M. Mahjoub, A. Rouabhi, M. Tijani, S. Granet, S. M’Jahad, J. Talandier, S. M’Jahad, J. Talandier, Numerical Study of Callovo-Oxfordian Argillite Expansion due to Gas Injection, *International Journal of Geomechanics*, **18**, 04017134 (2018).

Thank you!

Questions?