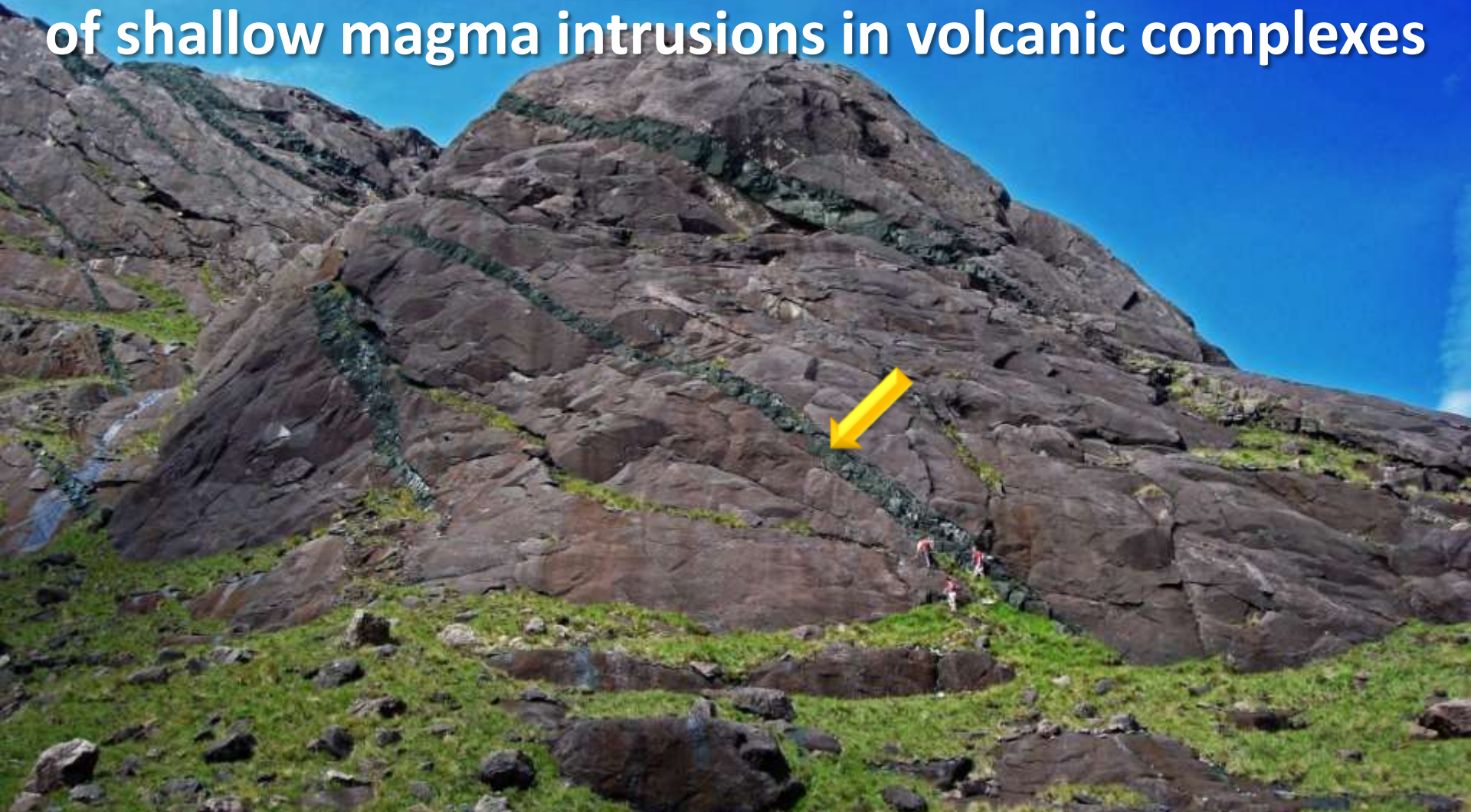


# Elasto-plastic FEM models explain the emplacement of shallow magma intrusions in volcanic complexes



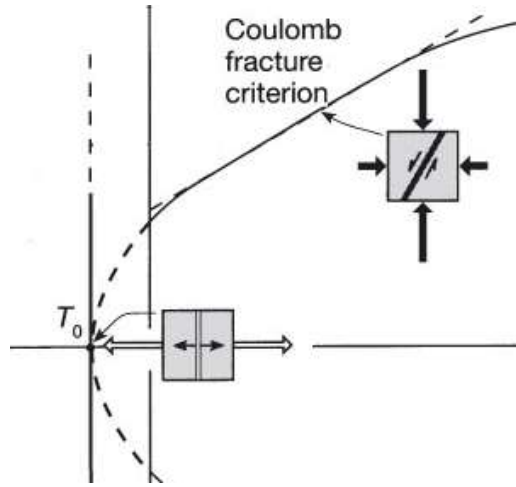
*Andrea Bistacchi*

*University of Milano Bicocca - Structural Geology Lab*

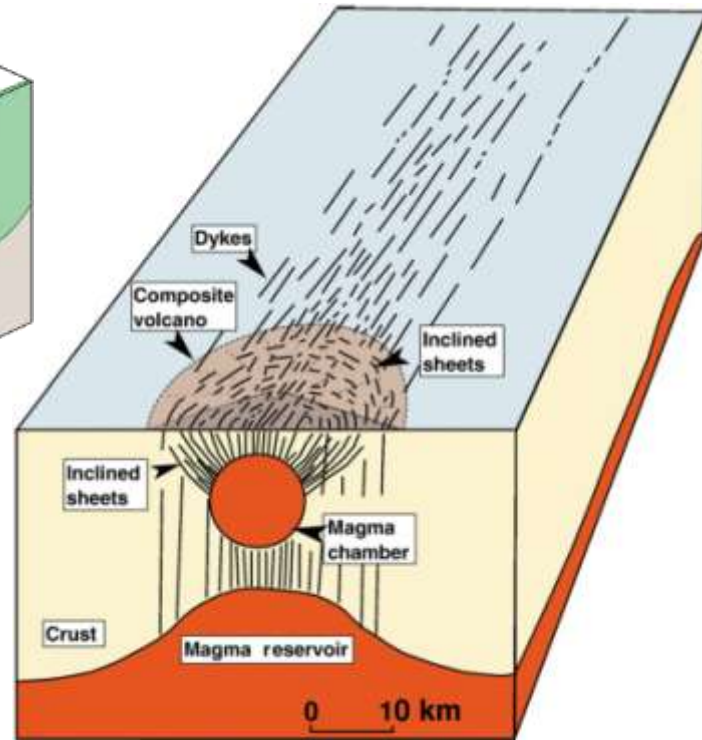
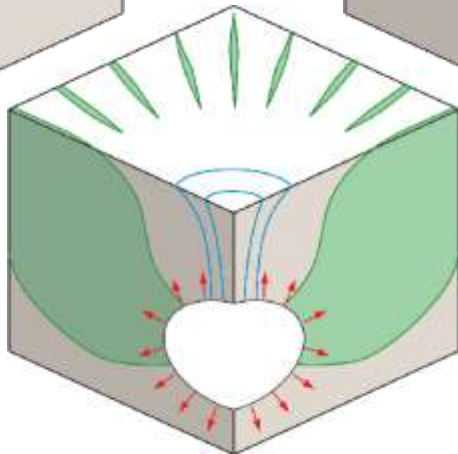
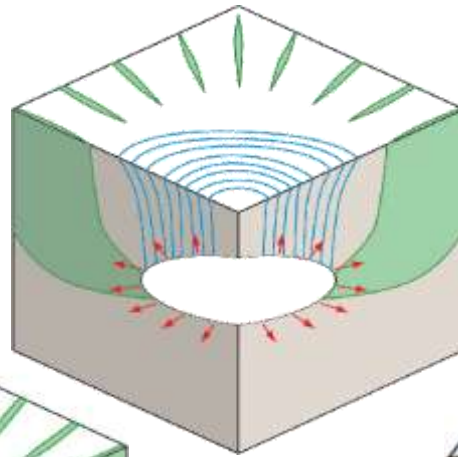
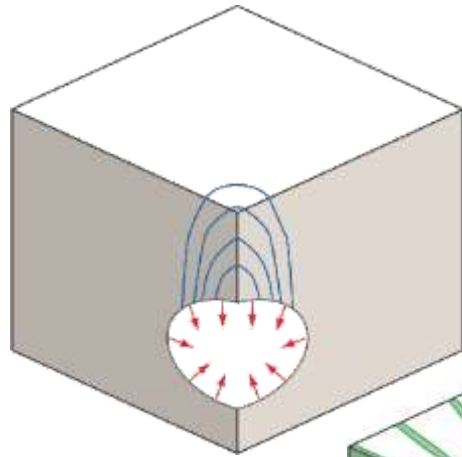
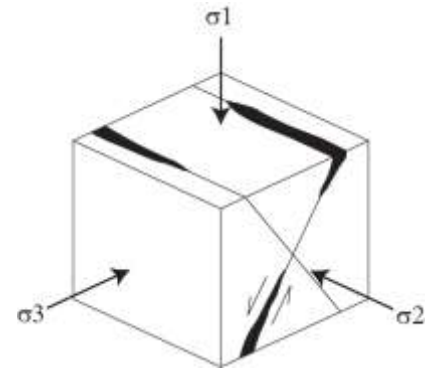
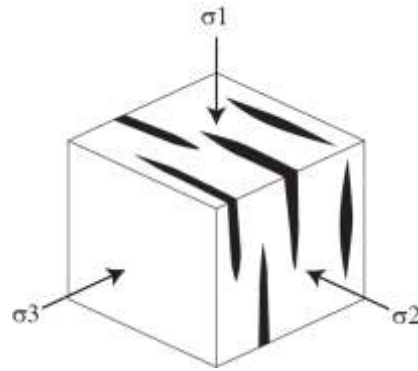
Excerpt from the Proceedings of the 2012 COMSOL Conference in Milan

# For non-geologists → magma intrusions are proxies for stress field

A modeling paradox? → Fieldwork on Skye → Conceptual model → FEM modeling → Conclusion



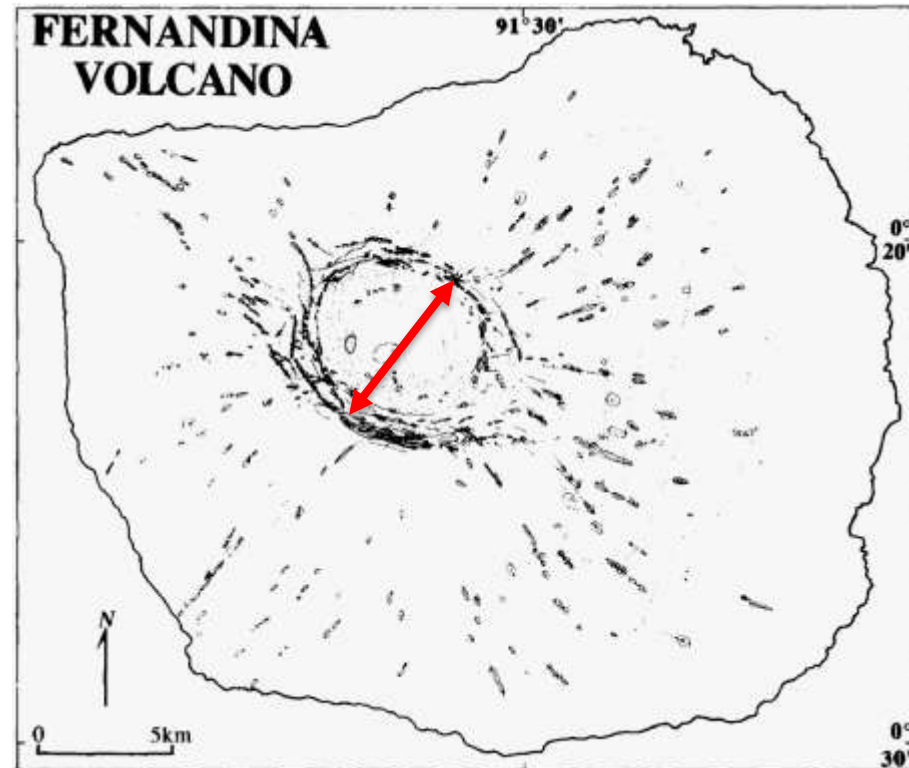
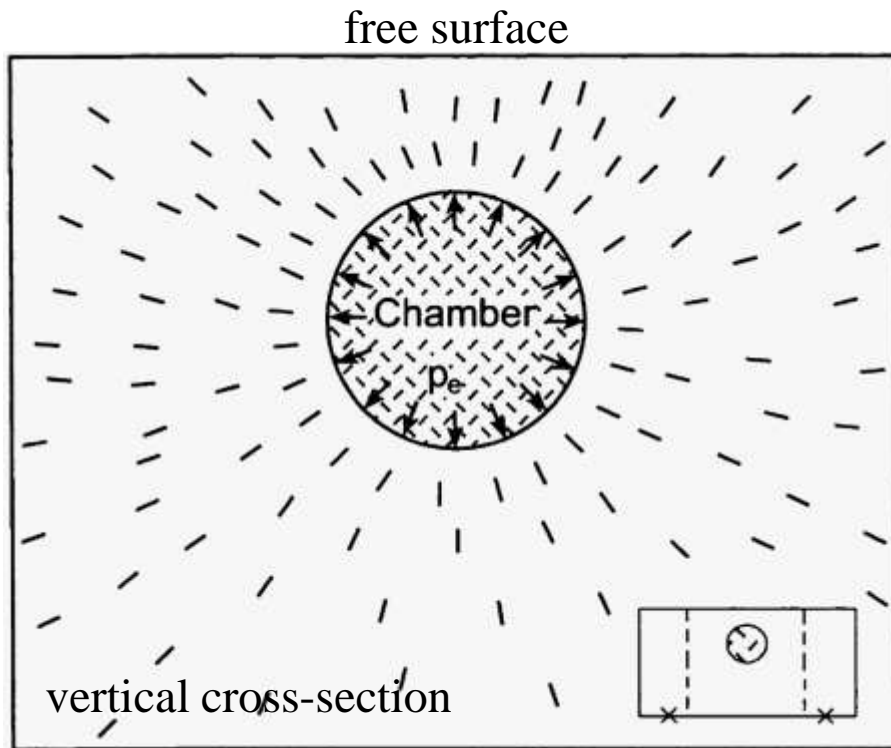
compressive stresses  $> 0$   
 $\sigma_3 < \sigma_2 < \sigma_1$



# Cone-sheets: a modeling paradox?

Models → cone-sheets predicted everywhere under small magma overpressure.

Nature → cone-sheets not always present and only in axial region, then switch to radial dikes.

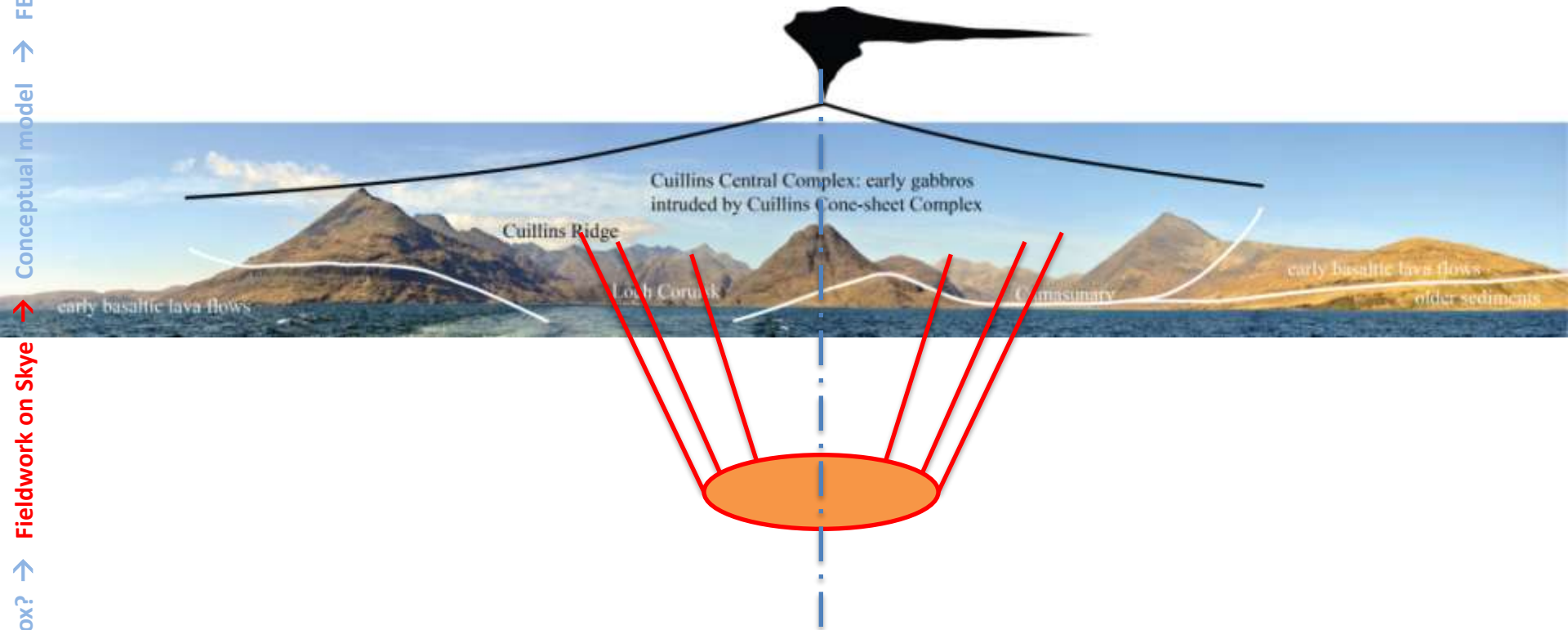


2D BEM or FEM model of a spherical magma chamber with overpressure.  $\sigma_1$  directions shown in a vertical cross-section (review in Gudmundsson, 2006).

Radial dykes and cone-sheets (inward-dipping circumferential dykes) on Fernandina, Galapagos, map view (Chadwick & Dieterich, 1995).

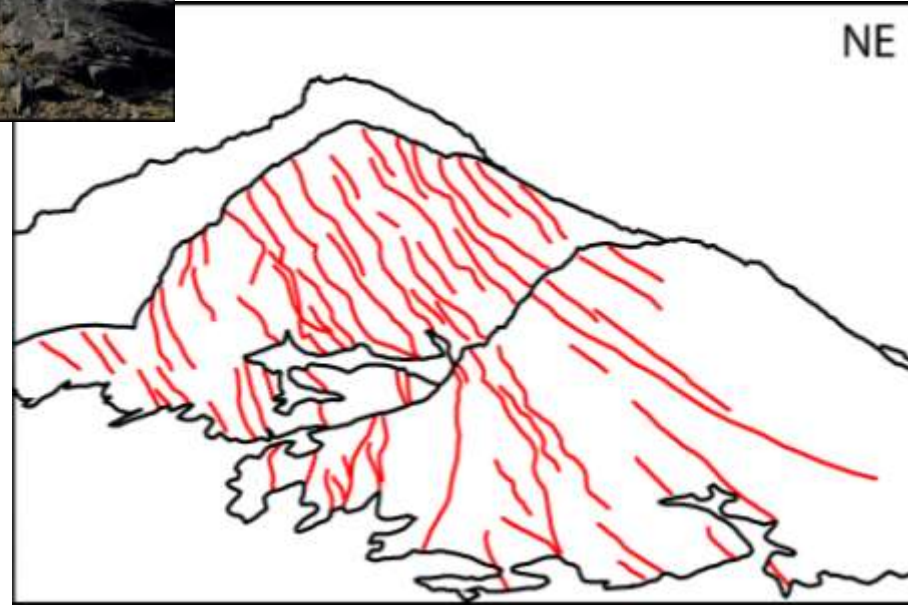
# Cone-sheets of the Isle of Skye

A modeling paradox? → Fieldwork on Skye → Conceptual model → FEM modeling → Conclusion

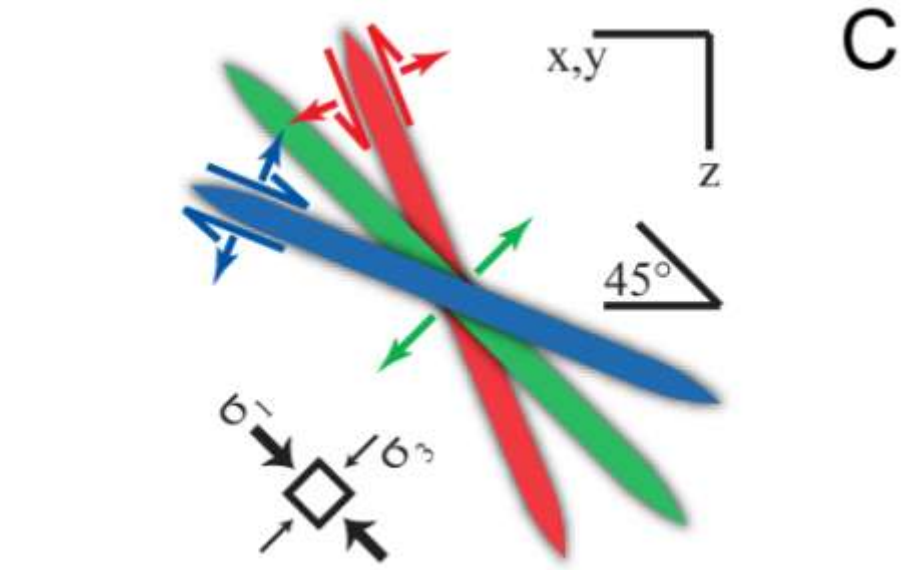
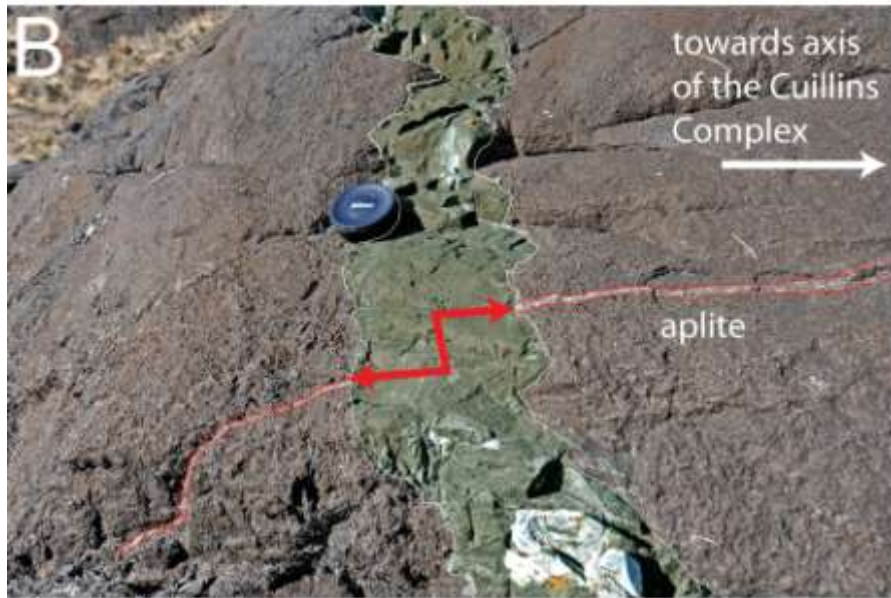


Bailey et al., 1924; Anderson, 1936.

# Cone-sheets of the Isle of Skye



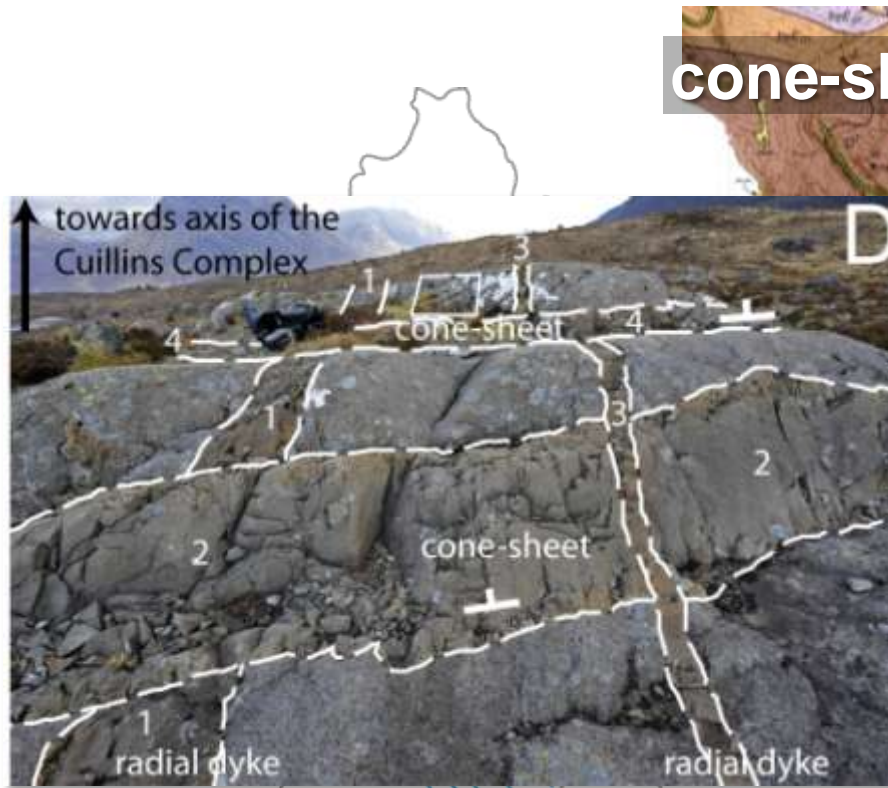
# Cone-sheets of the Isle of Skye



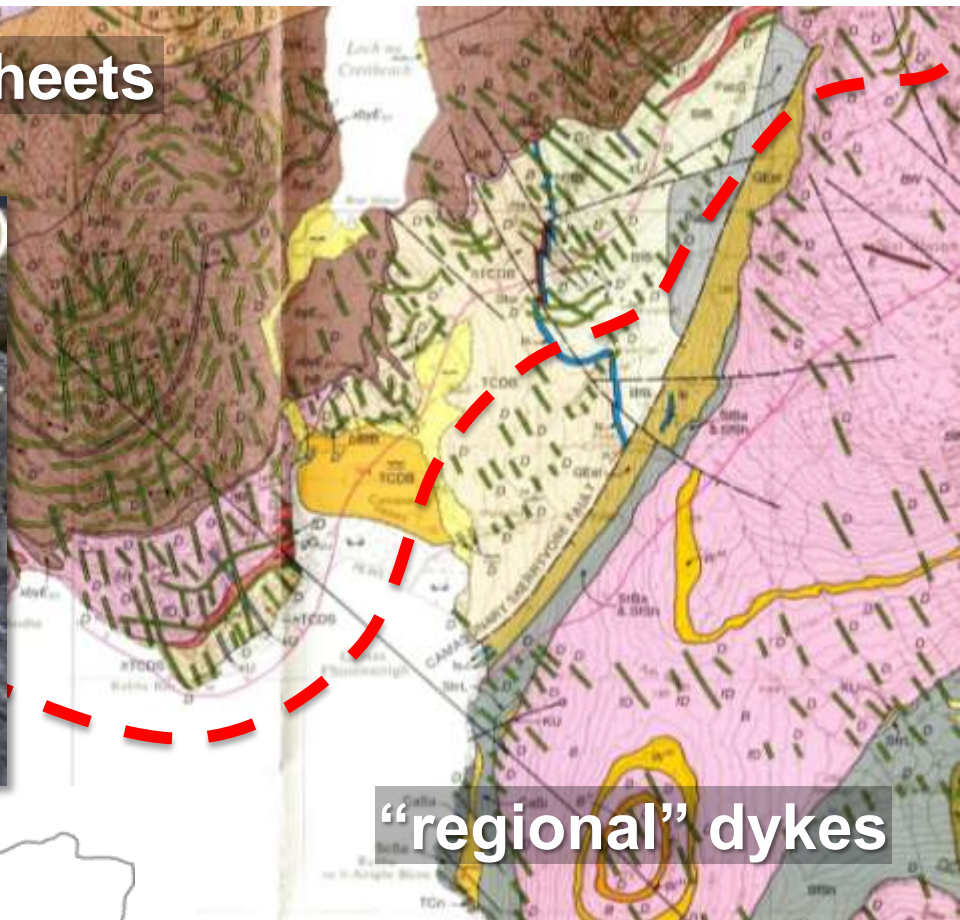
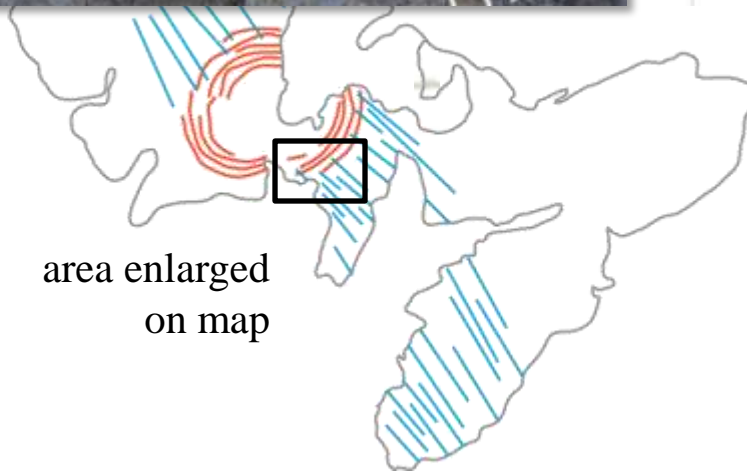
A modeling paradox? → Fieldwork on Skye → Conceptual model → FEM modeling → Conclusion

# Cone-sheets “critical” distance

A modeling paradox? → Fieldwork on Skye → Conceptual model → FEM modeling → Conclusion



cone-sheets

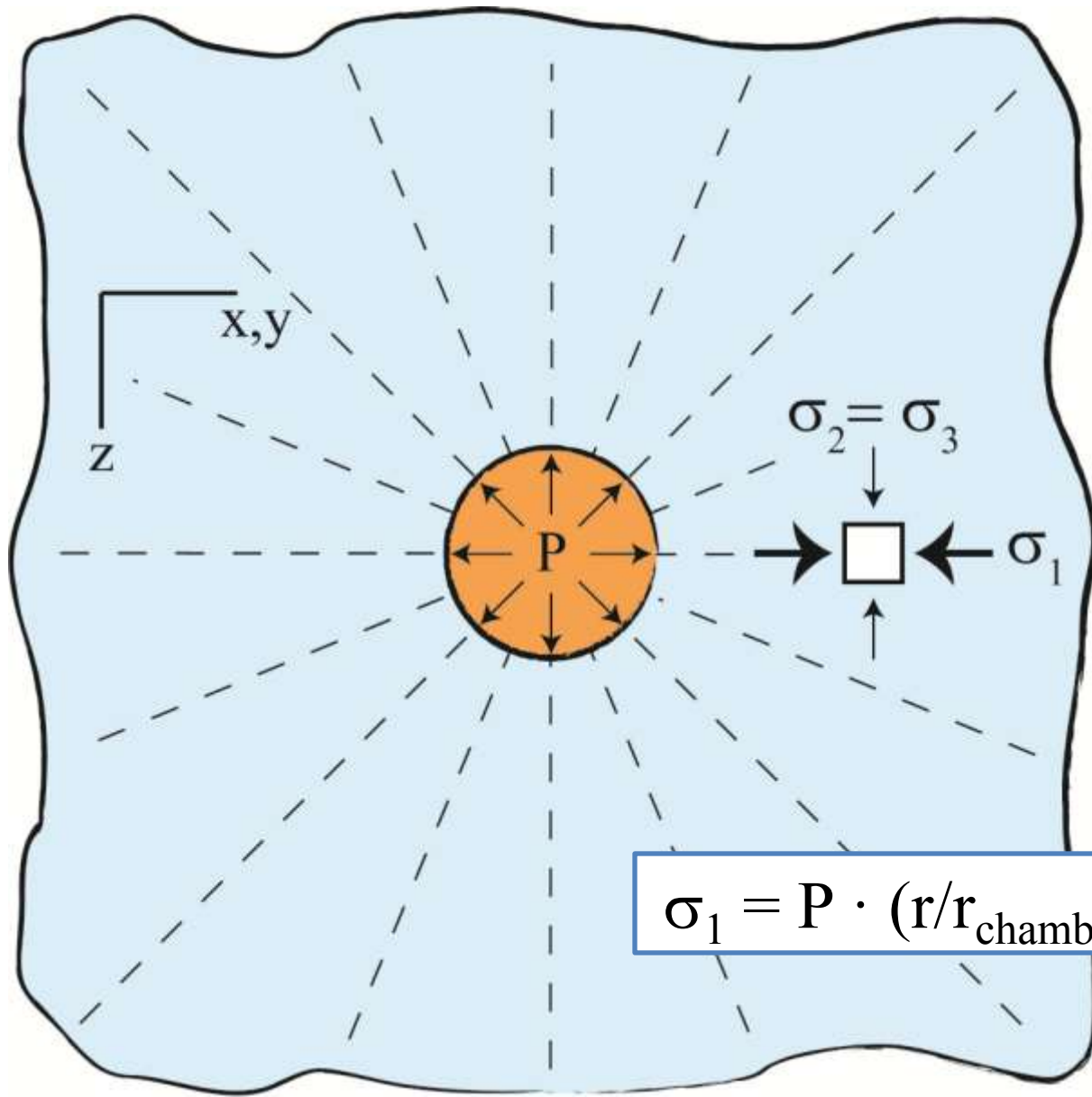


(British Geological Survey, 2005)





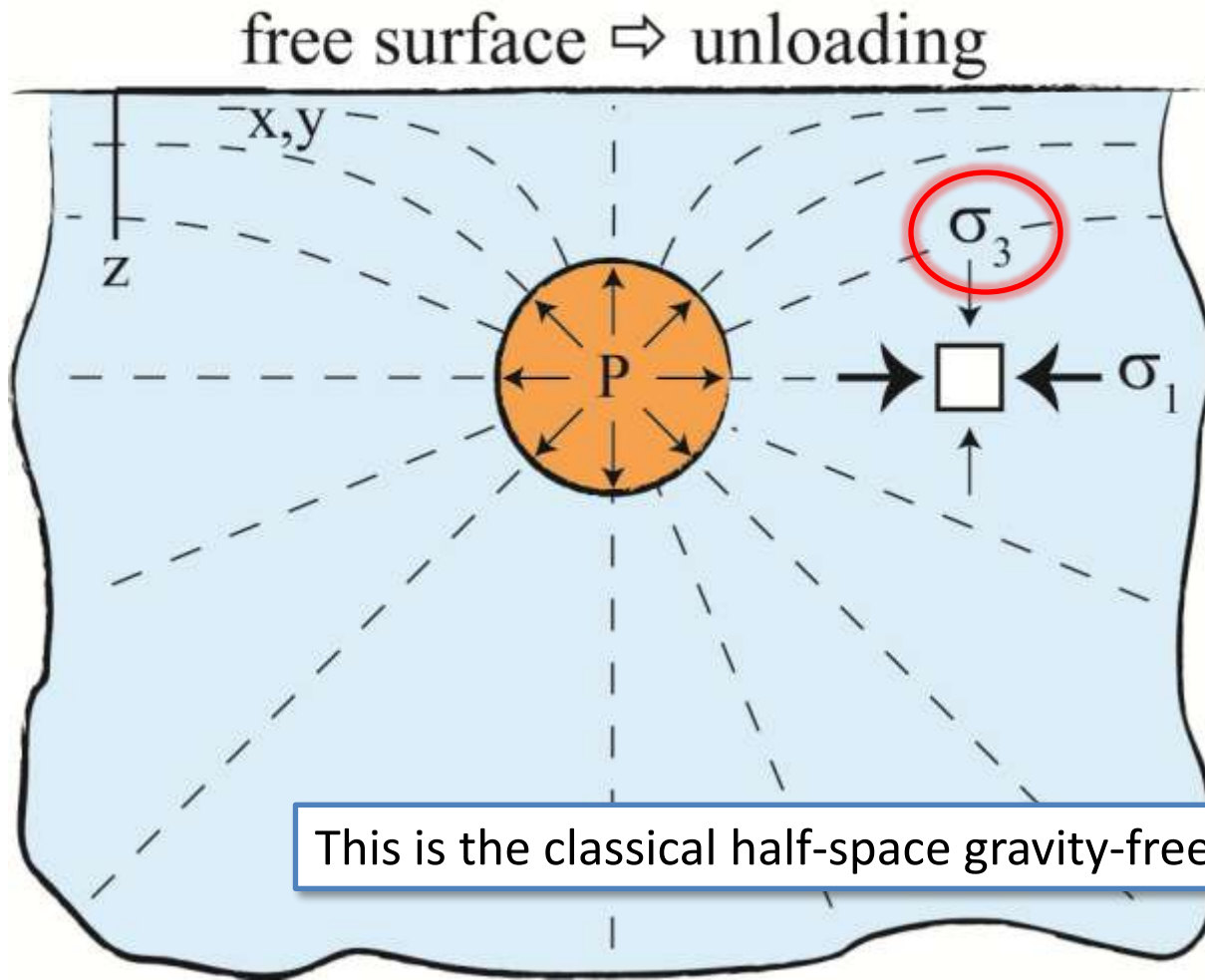
# Conceptual model: pure overpressure...



$$\sigma_1 = P \cdot \left( \frac{r}{r_{\text{chamber}}} \right)^2$$

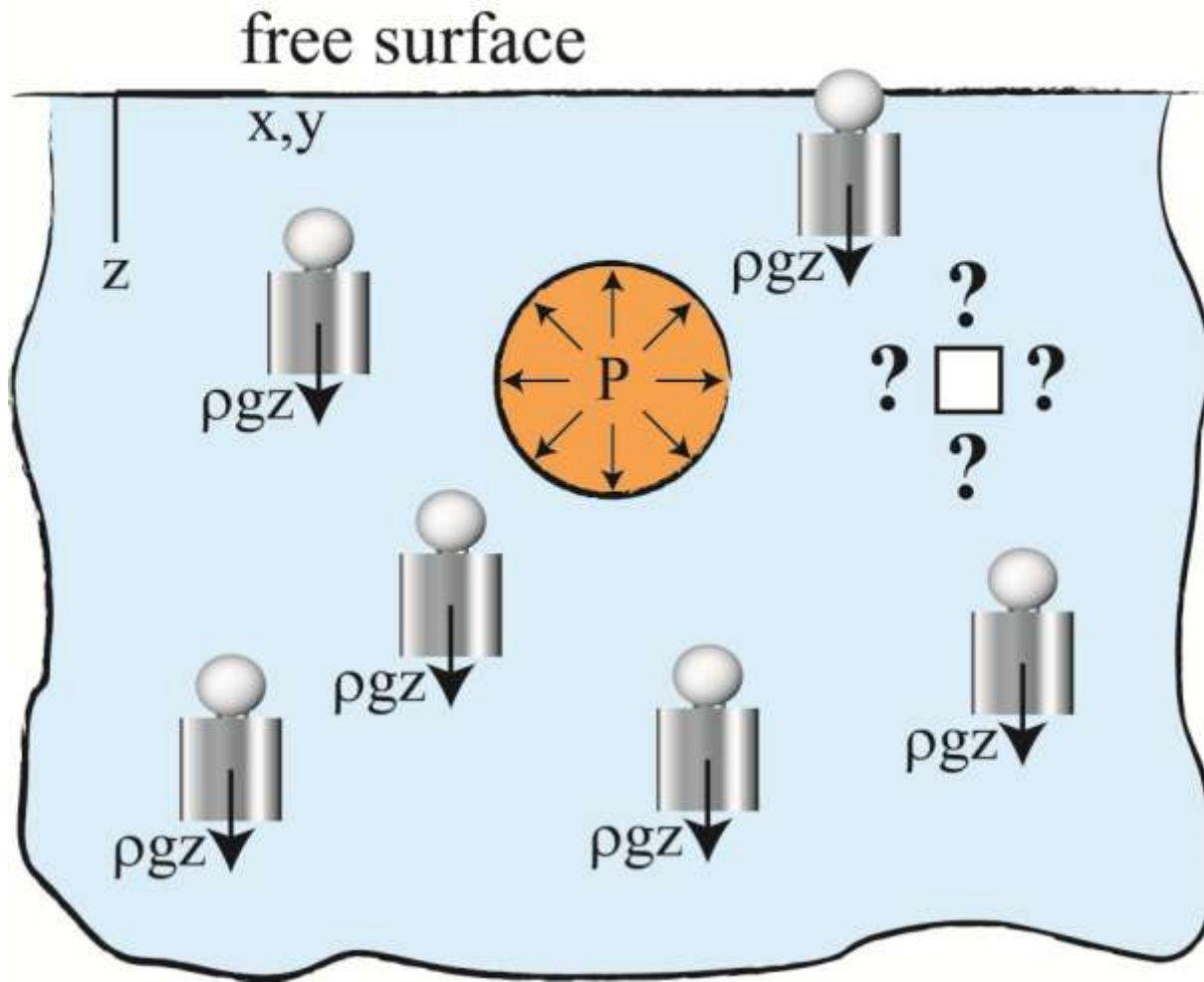
# Conceptual model: the classic model

→ cone-sheets everywhere



This is the classical half-space gravity-free elastic model

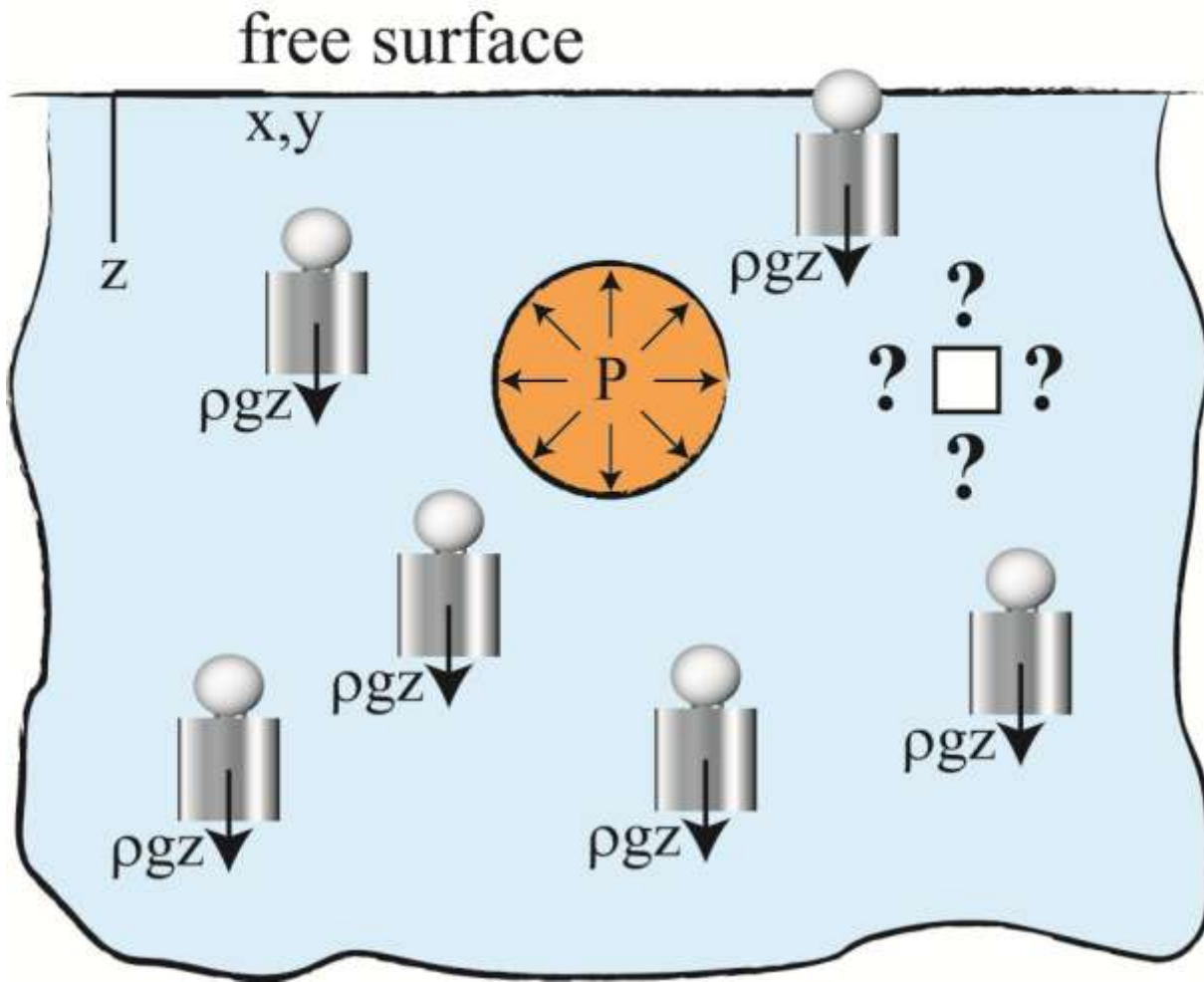
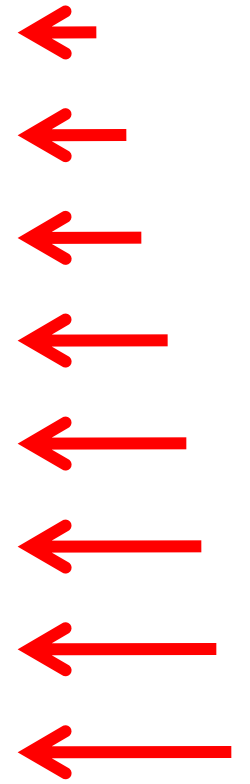
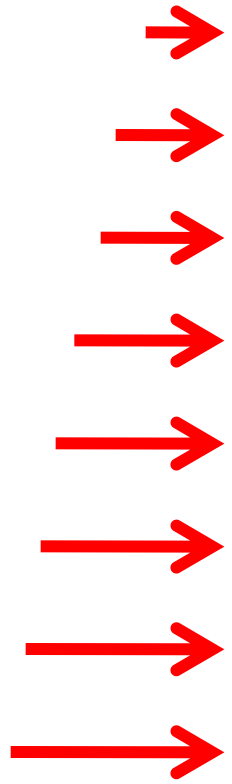
# Conceptual model: gravity...



# Conceptual model: ... and tectonics

regional  
tectonics

regional  
tectonics



# Finite Element Method modeling

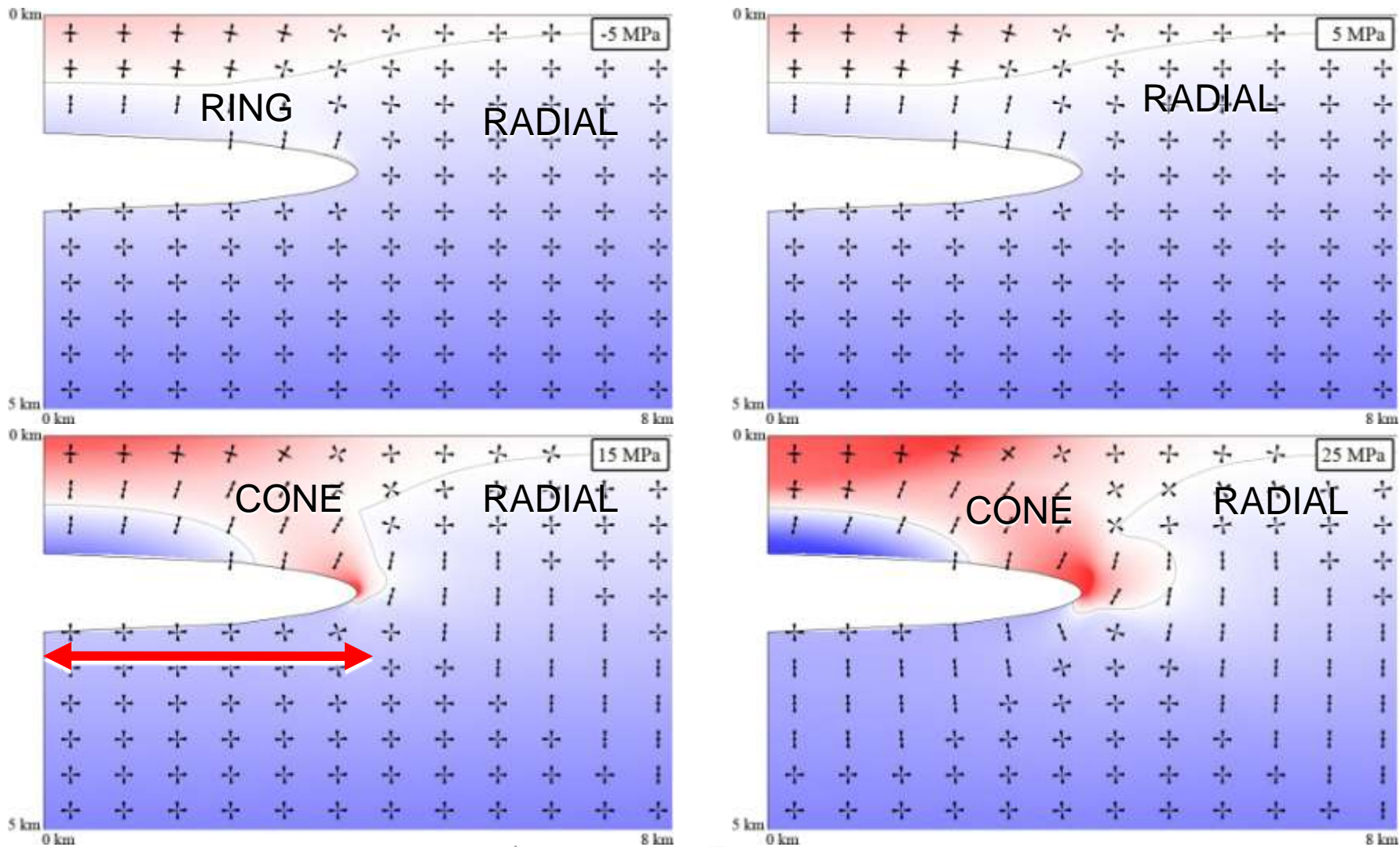
The question we are asking to FEM models is: “Does the complex **interplay** of magma overpressure, effect of a free surface, gravitational body load, and regional tectonics may produce the observed **switch** from cone-sheets to radial or “regional” parallel dikes? And under what **conditions**?”

## Model “ingredients”:

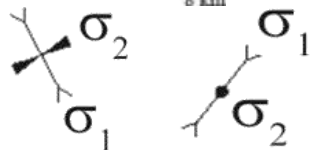
- solve equilibrium equations for displacements under body loads (**gravity**) and mixed BC’s (**magma pressure, tectonics** and zero displacements)
- geometry: **2D axial-symmetric** or **3D**
- material: homogeneous isotropic **elasto-plastic** Drucker-Prager
- nonlinear parametric solver (COMSOL Multiphysics<sup>®</sup>)
- improved 3D visualization with gOcad<sup>®</sup>

# FEM modeling results - 1

2D axisymmetric: increasing overpressure in an oblate chamber



stress axes  $\leftrightarrow$  dykes:

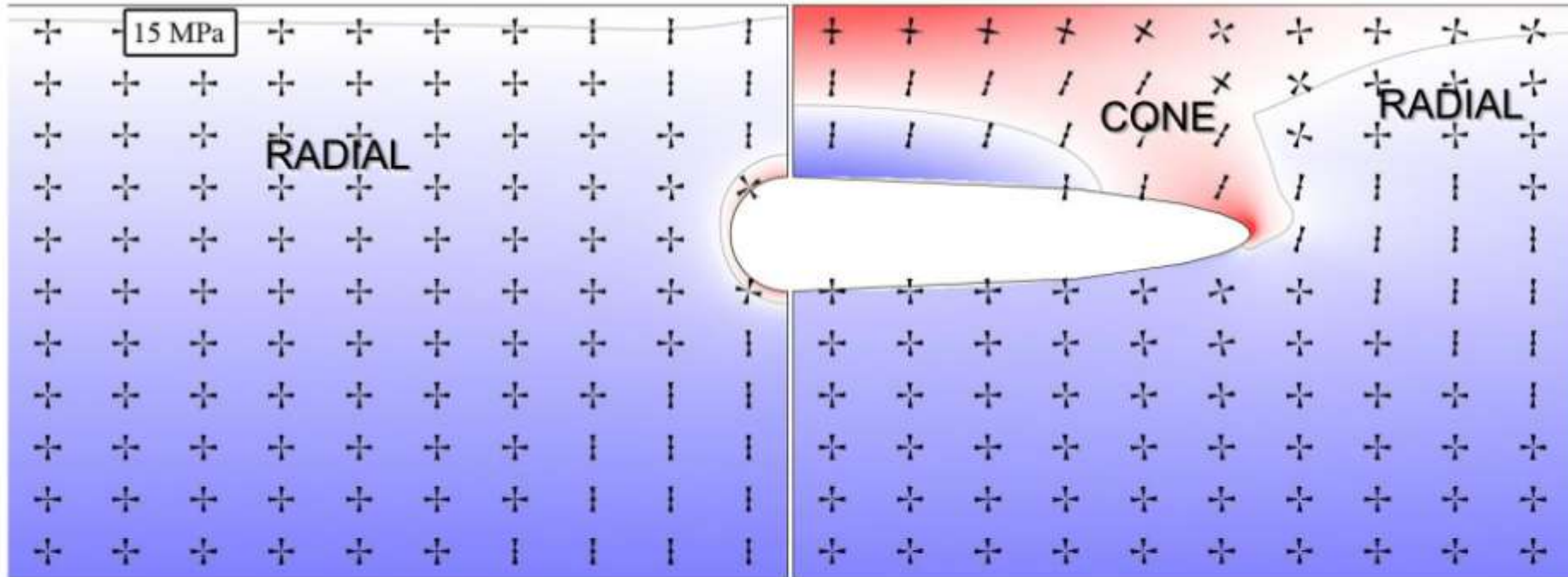


red  $\rightarrow$   $\sigma_3$  is tensional

A modeling paradox?  $\rightarrow$  Fieldwork on Skye  $\rightarrow$  Conceptual model  $\rightarrow$  FEM modeling  $\rightarrow$  Conclusion

# FEM modeling results - 2

2D axisymmetric: spherical vs. oblate chamber



stress axes:  $\begin{matrix} \times & \sigma_1 \\ & \sigma_2 \end{matrix}$   $\begin{matrix} \sigma_1 \\ / & \sigma_2 \end{matrix}$

red  $\rightarrow$   $\sigma_3$  is tensional

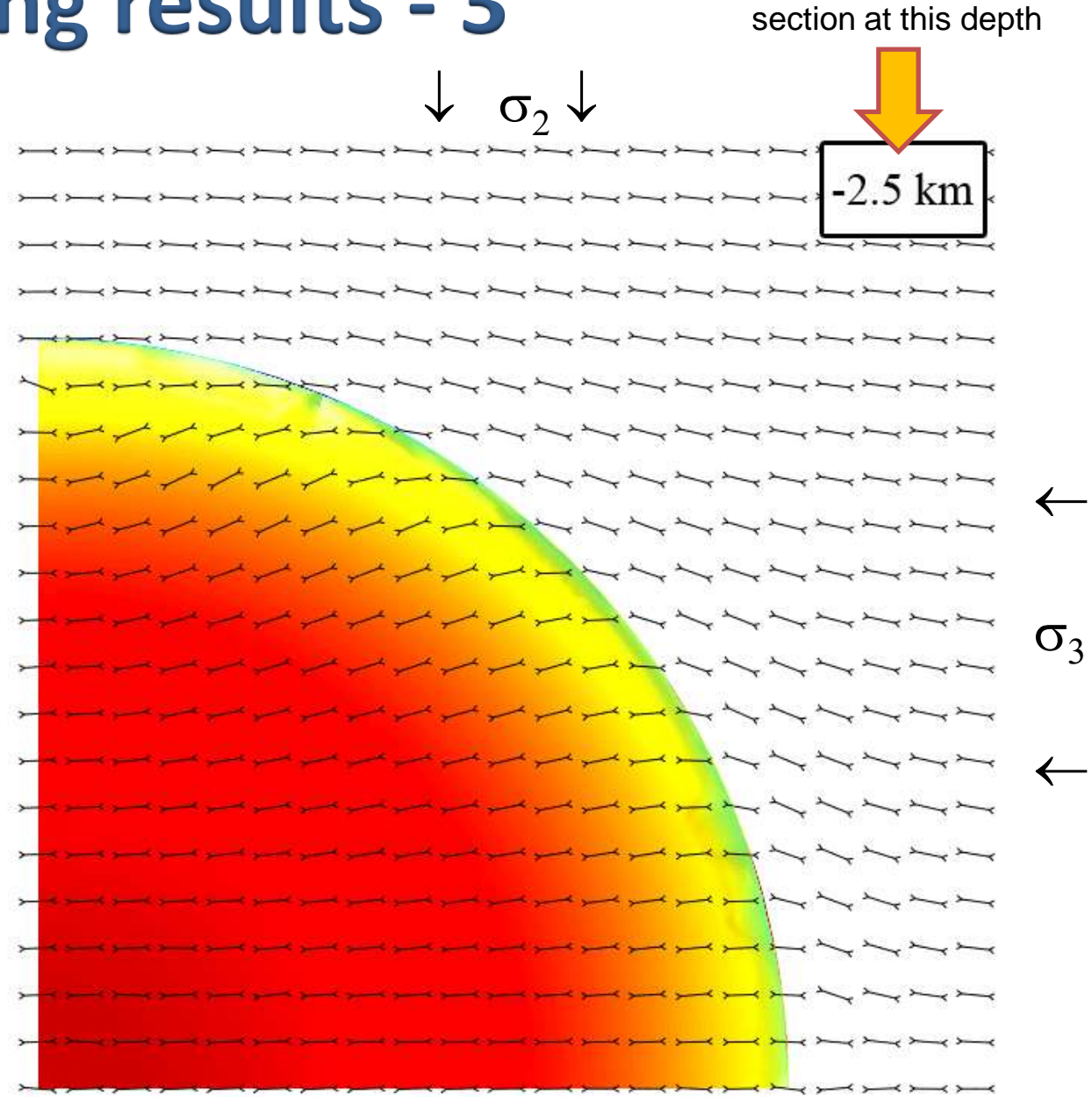
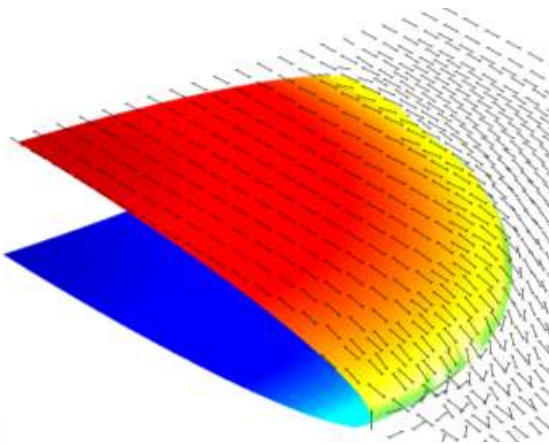
$\rightarrow$  spherical magma chamber not compatible with cone-sheets

# FEM modeling results - 3

3D: oblate magma chamber seen from above, at increasingly deep slices; only  $\sigma_3$  is shown.

→ cone-sheets above magma chamber

→ parallel dykes after a threshold distance



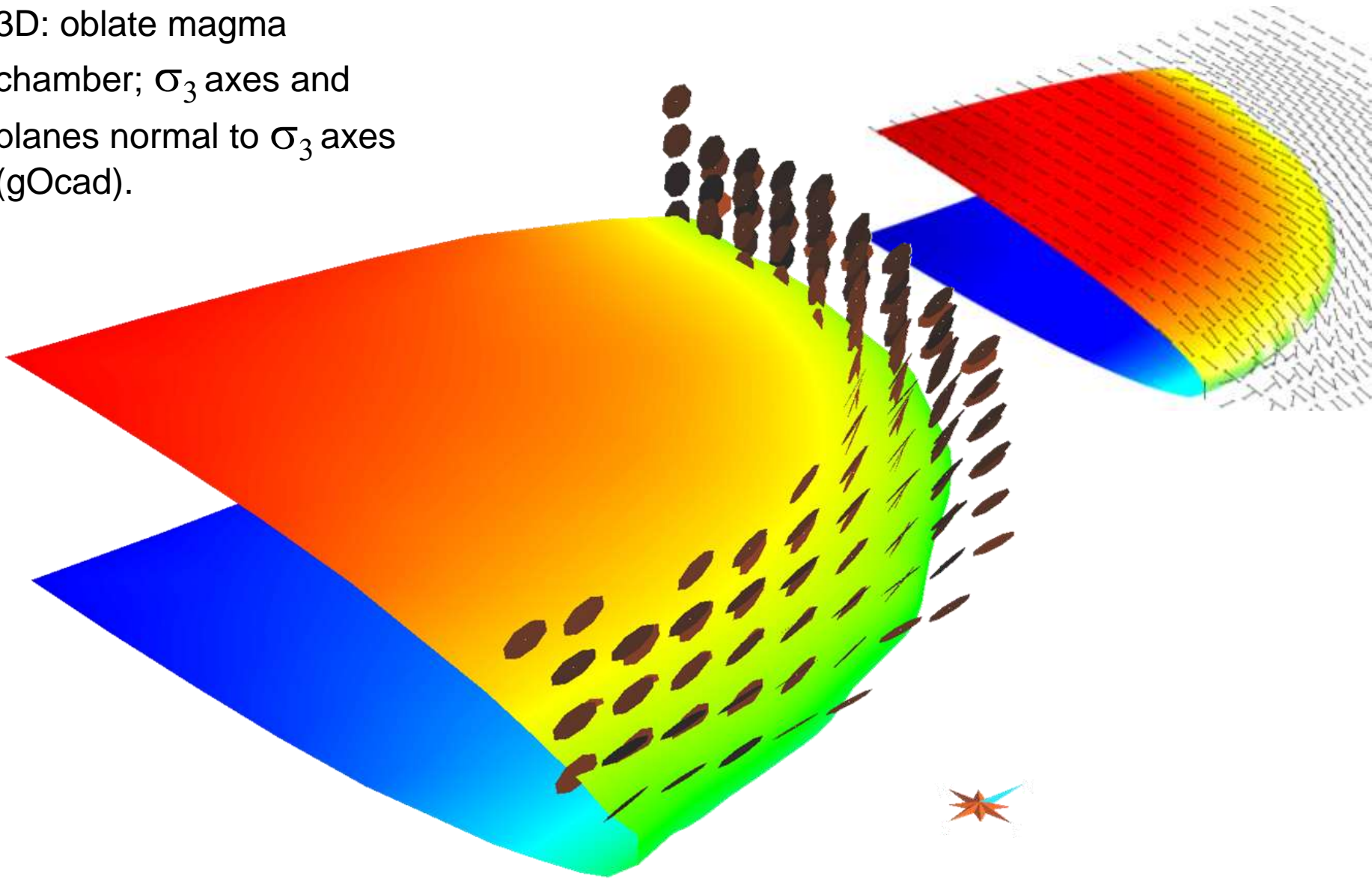
[Static visualization is not really satisfying. If you are interested, I have 3D models on my laptop.]

A modeling paradox? → Fieldwork on Skye → Conceptual model → FEM modeling → Conclusion



# FEM modeling results - 4

3D: oblate magma chamber;  $\sigma_3$  axes and planes normal to  $\sigma_3$  axes (gOcad).



[Static visualization is not really satisfying. If you are interested, I have 3D models on my laptop.]

# Conclusions

- > 2D axisymmetric **elasto-plastic** models with **gravity** explain scale models, 3D models with **tectonics** explain field examples.
- > An **oblate** magma chamber is required for cone-sheet development. The cone-sheet annular region depicts the **diameter** of the magma chamber.
- > Possible applications include:
  - > to infer the **shape and dimensions of shallow magma chamber**.
  - > to infer the **tensional state** of the system.



ELSEVIER

Contents lists available at SciVerse ScienceDirect

## Earth and Planetary Science Letters

journal homepage: [www.elsevier.com/locate/epsl](http://www.elsevier.com/locate/epsl)



# The association of cone–sheets and radial dykes: Data from the Isle of Skye (UK), numerical modelling, and implications for shallow magma chambers

Andrea Bistacchi <sup>a,\*</sup>, Alessandro Tibaldi <sup>a</sup>, Federico A. Pasquarè <sup>b</sup>, Derek Rust <sup>c</sup>

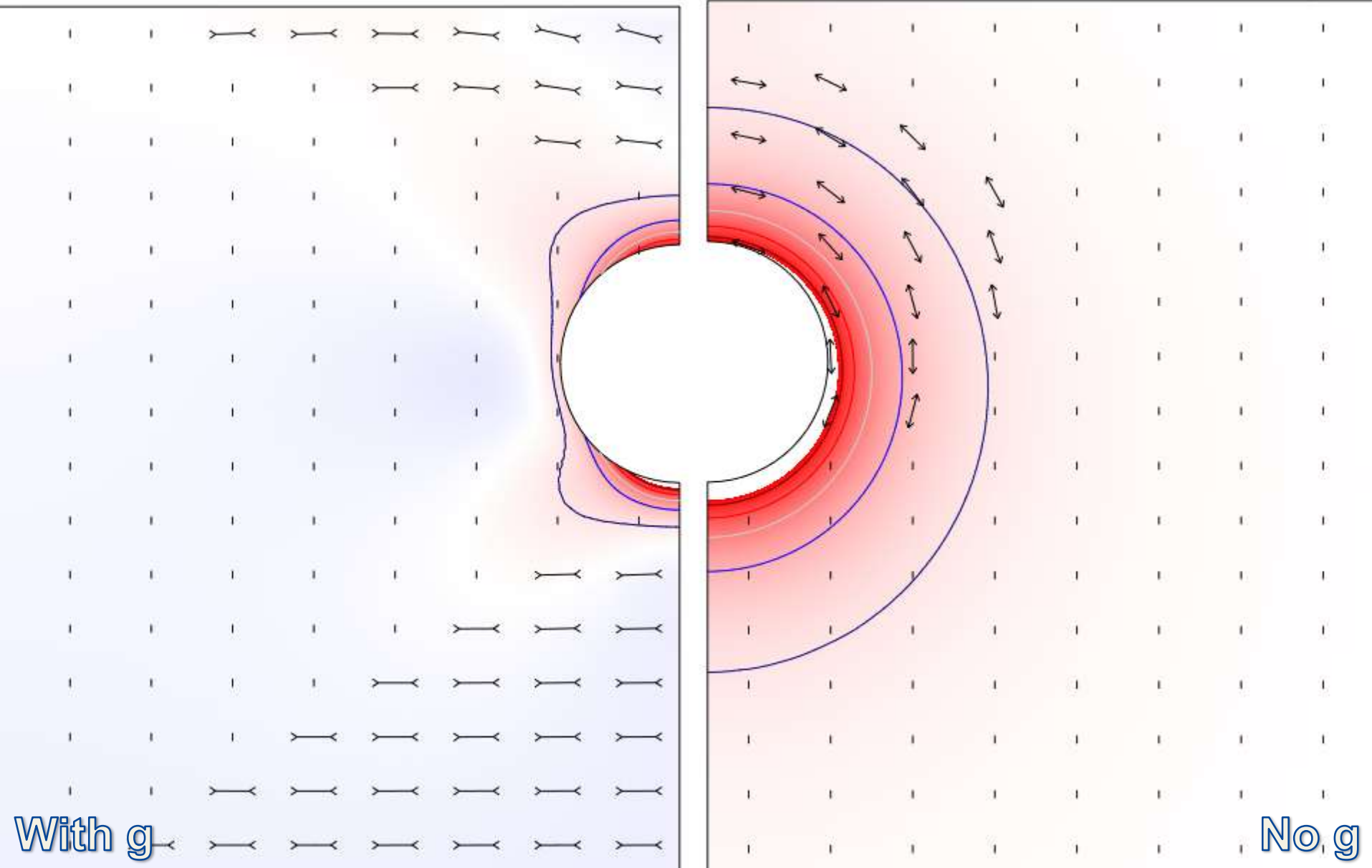
<sup>a</sup> Dipartimento di Scienze Geologiche e Geotecnologie, Università degli Studi di Milano Bicocca, Italy

<sup>b</sup> Dipartimento di Scienze Chimiche e Ambientali, Università degli Studi dell'Insubria, Italy

<sup>c</sup> School of Earth and Environmental Sciences, University of Portsmouth, UK



# Elastic: with or without gravity $\sigma_3$

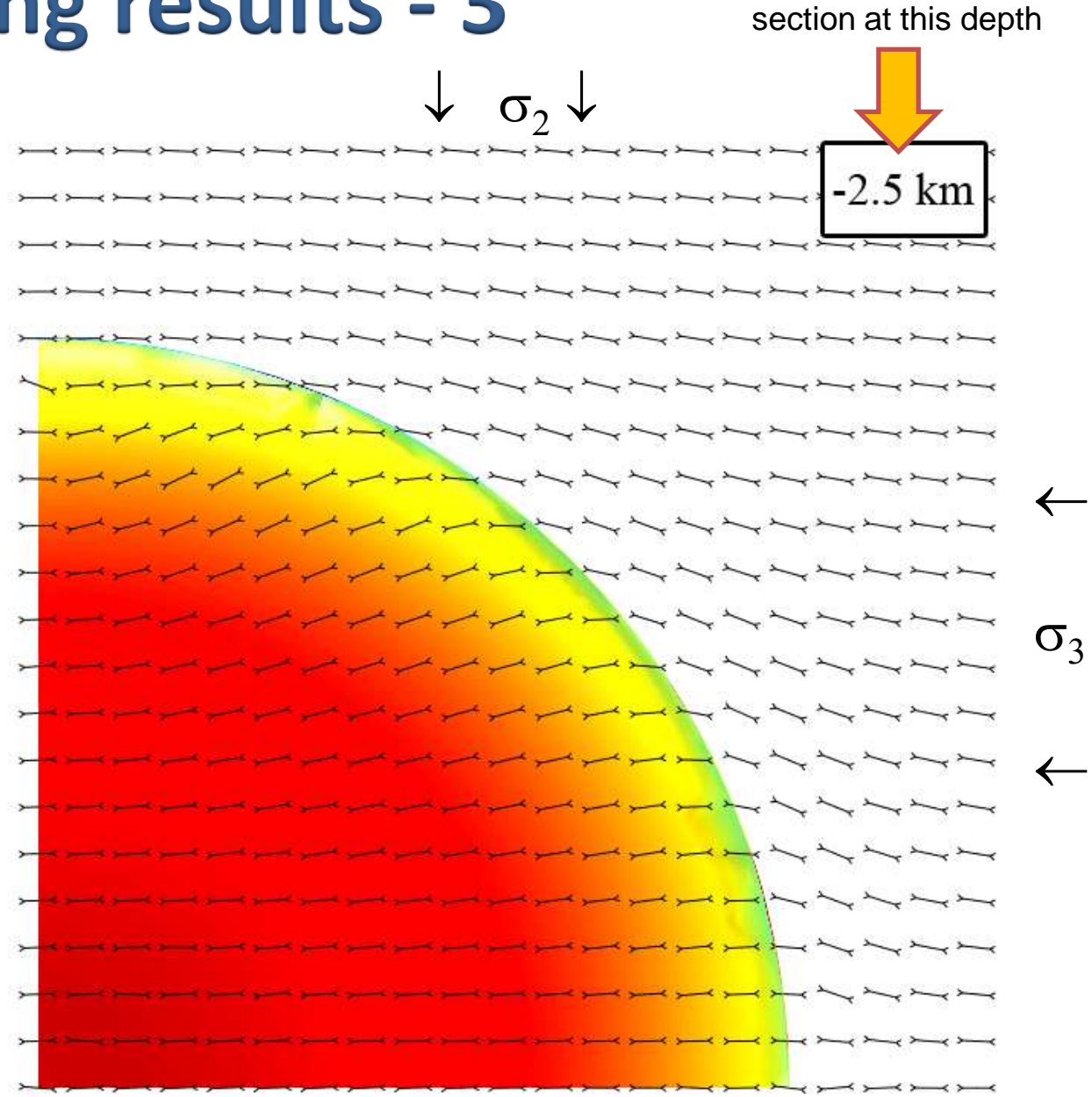
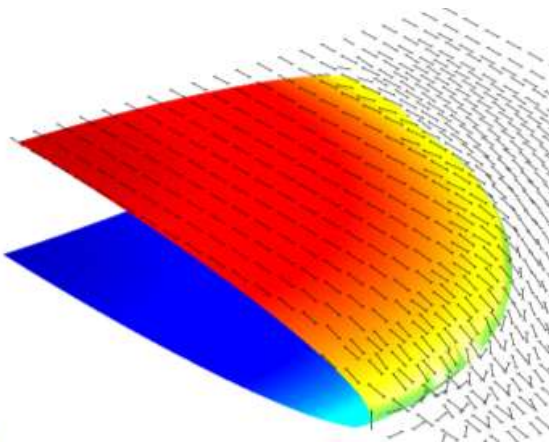


# FEM modeling results - 3

3D: oblate magma chamber seen from above, at increasingly deep slices; only  $\sigma_3$  is shown.

→ cone-sheets above magma chamber

→ parallel dykes after a threshold distance



[Static visualization is not really satisfying. If you are interested, I have 3D models on my laptop.]

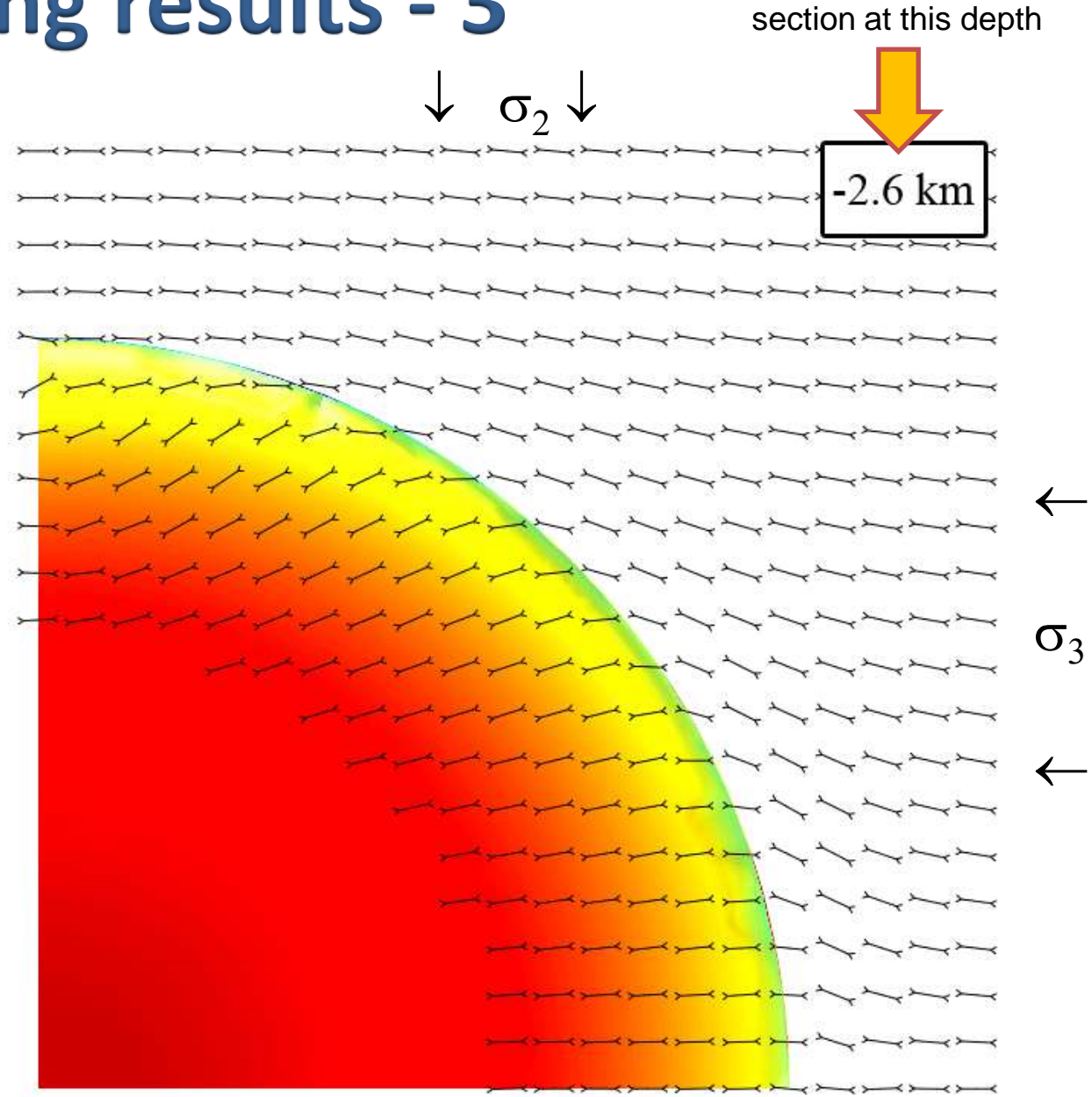
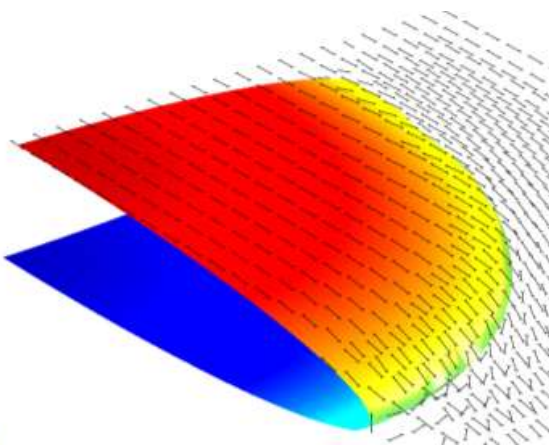
A modeling paradox? → Fieldwork on Skye → Conceptual model → FEM modeling → Conclusion

# FEM modeling results - 3

3D: oblate magma chamber seen from above, at increasingly deep slices; only  $\sigma_3$  is shown.

→ cone-sheets above magma chamber

→ parallel dykes after a threshold distance



[Static visualization is not really satisfying. If you are interested, I have 3D models on my laptop.]

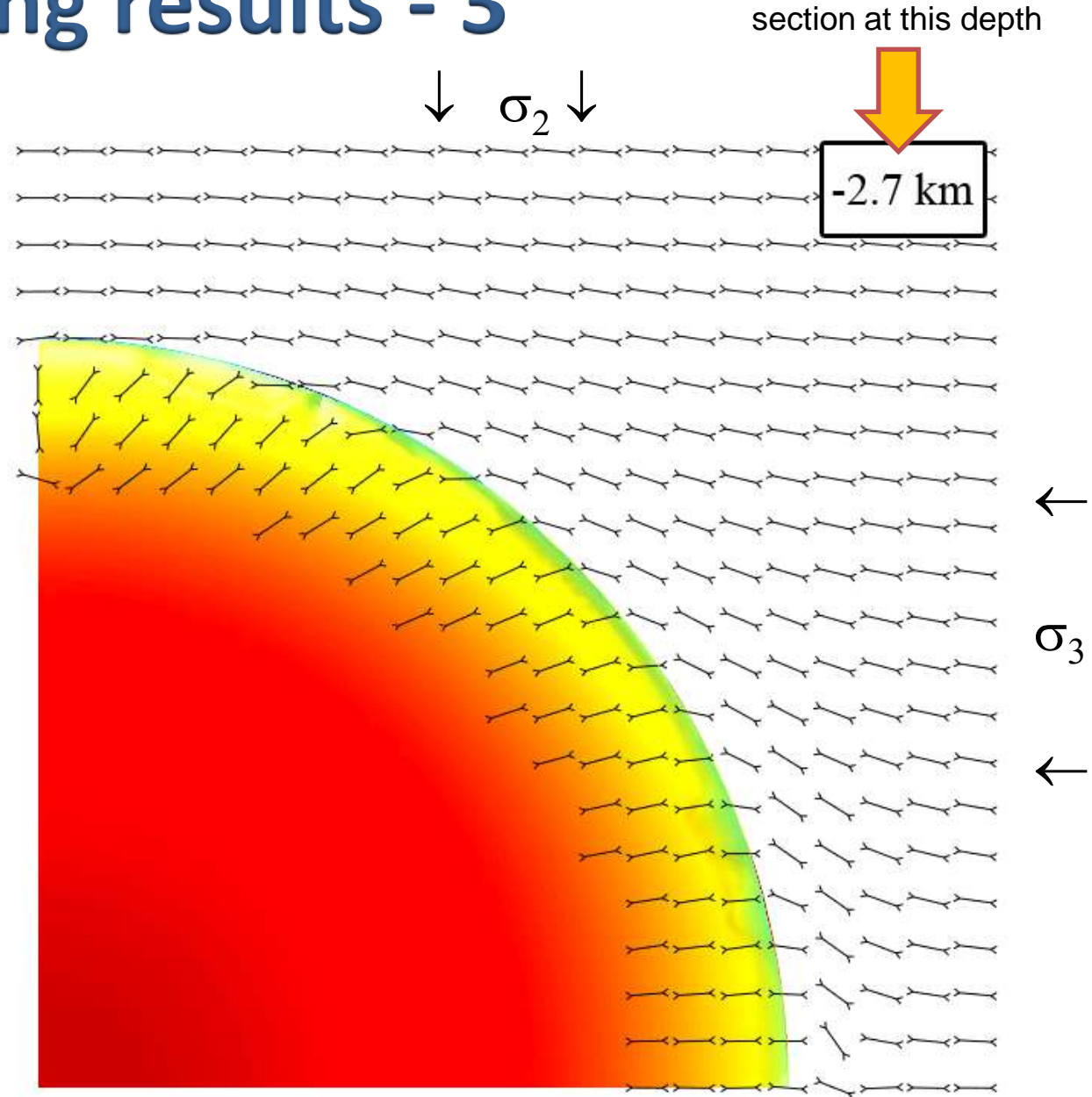
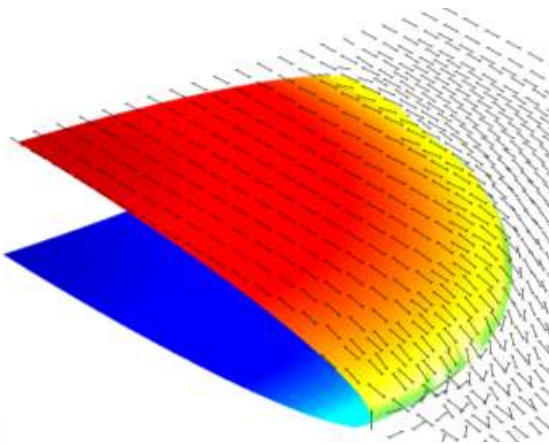
A modeling paradox? → Fieldwork on Skye → Conceptual model → FEM modeling → Conclusion

# FEM modeling results - 3

3D: oblate magma chamber seen from above, at increasingly deep slices; only  $\sigma_3$  is shown.

→ cone-sheets above magma chamber

→ parallel dykes after a threshold distance



[Static visualization is not really satisfying. If you are interested, I have 3D models on my laptop.]

A modeling paradox? → Fieldwork on Skye → Conceptual model → FEM modeling → Conclusion

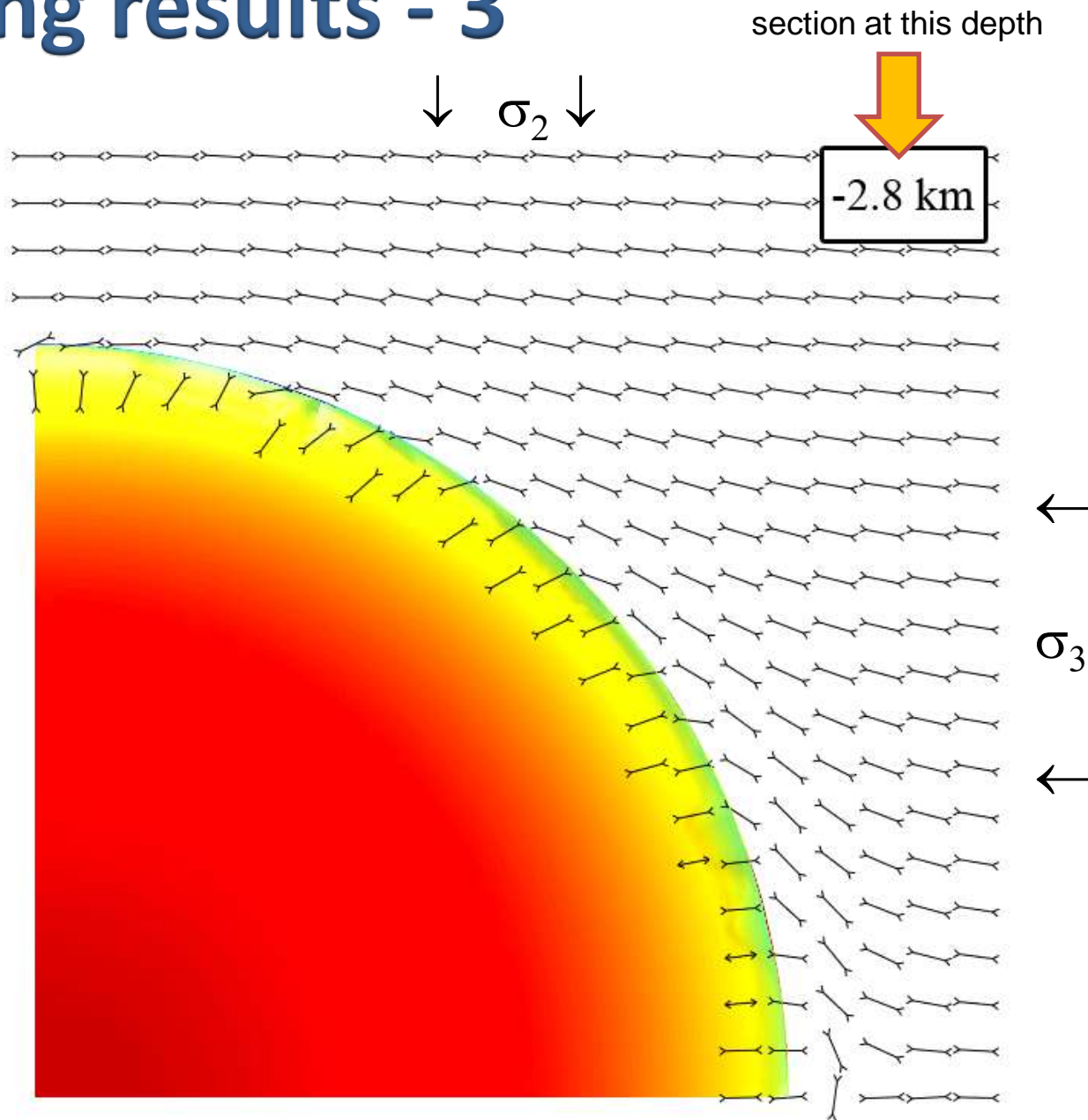
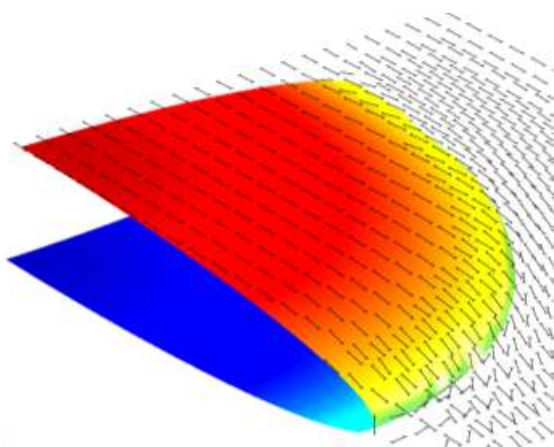


# FEM modeling results - 3

3D: oblate magma chamber seen from above, at increasingly deep slices; only  $\sigma_3$  is shown.

→ cone-sheets above magma chamber

→ parallel dykes after a threshold distance



[Static visualization is not really satisfying. If you are interested, I have 3D models on my laptop.]

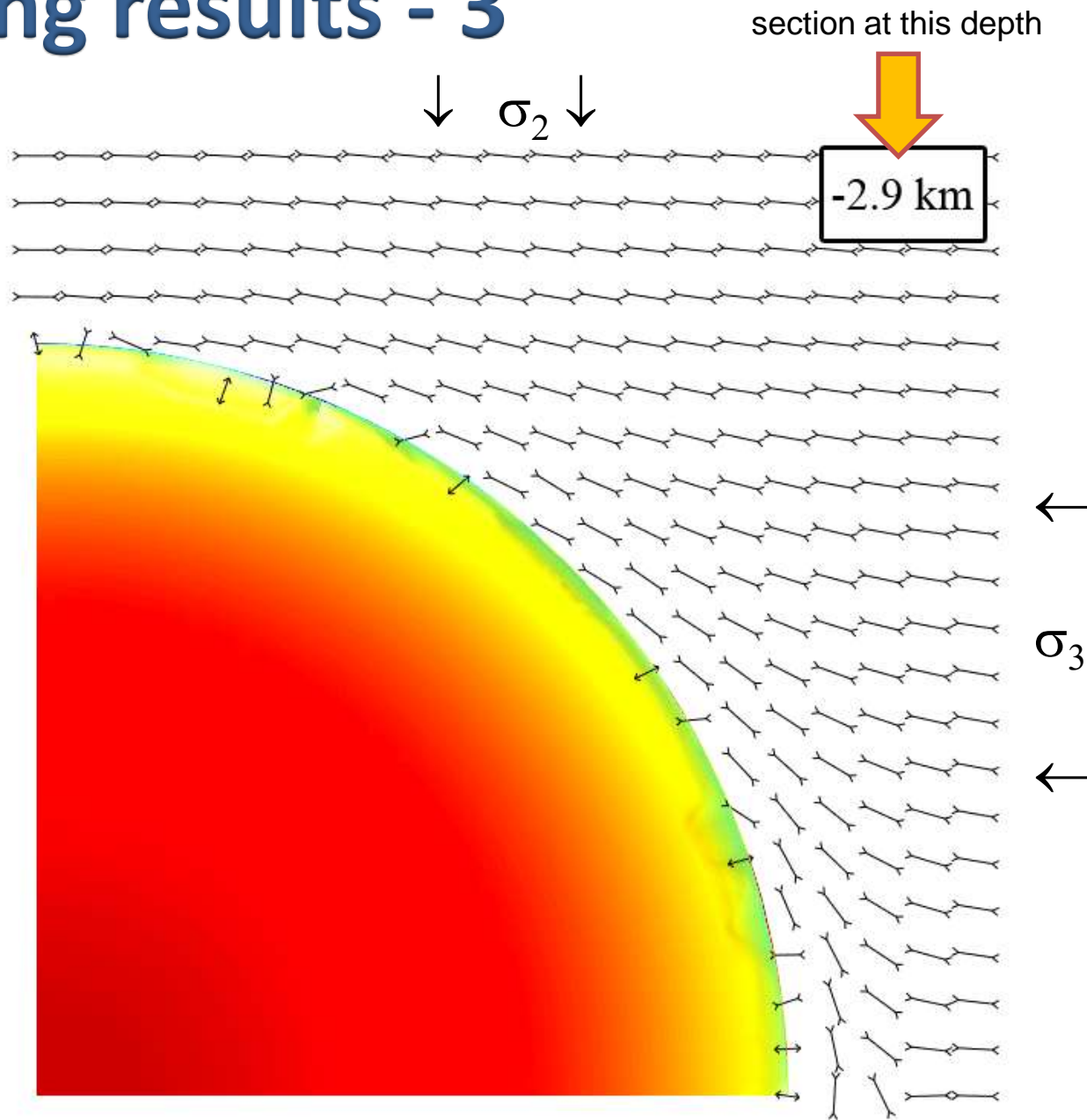
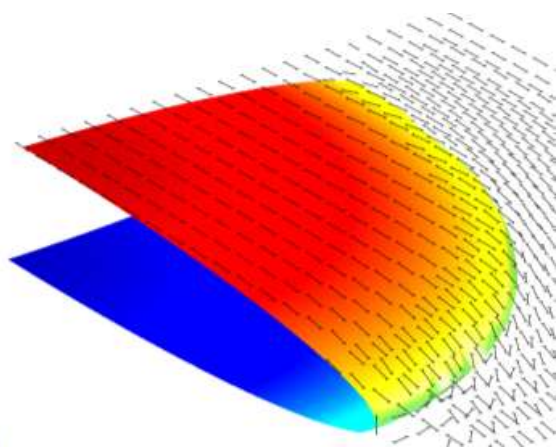
A modeling paradox? → Fieldwork on Skye → Conceptual model → FEM modeling → Conclusion

# FEM modeling results - 3

3D: oblate magma chamber seen from above, at increasingly deep slices; only  $\sigma_3$  is shown.

→ cone-sheets above magma chamber

→ parallel dykes after a threshold distance



[Static visualization is not really satisfying. If you are interested, I have 3D models on my laptop.]

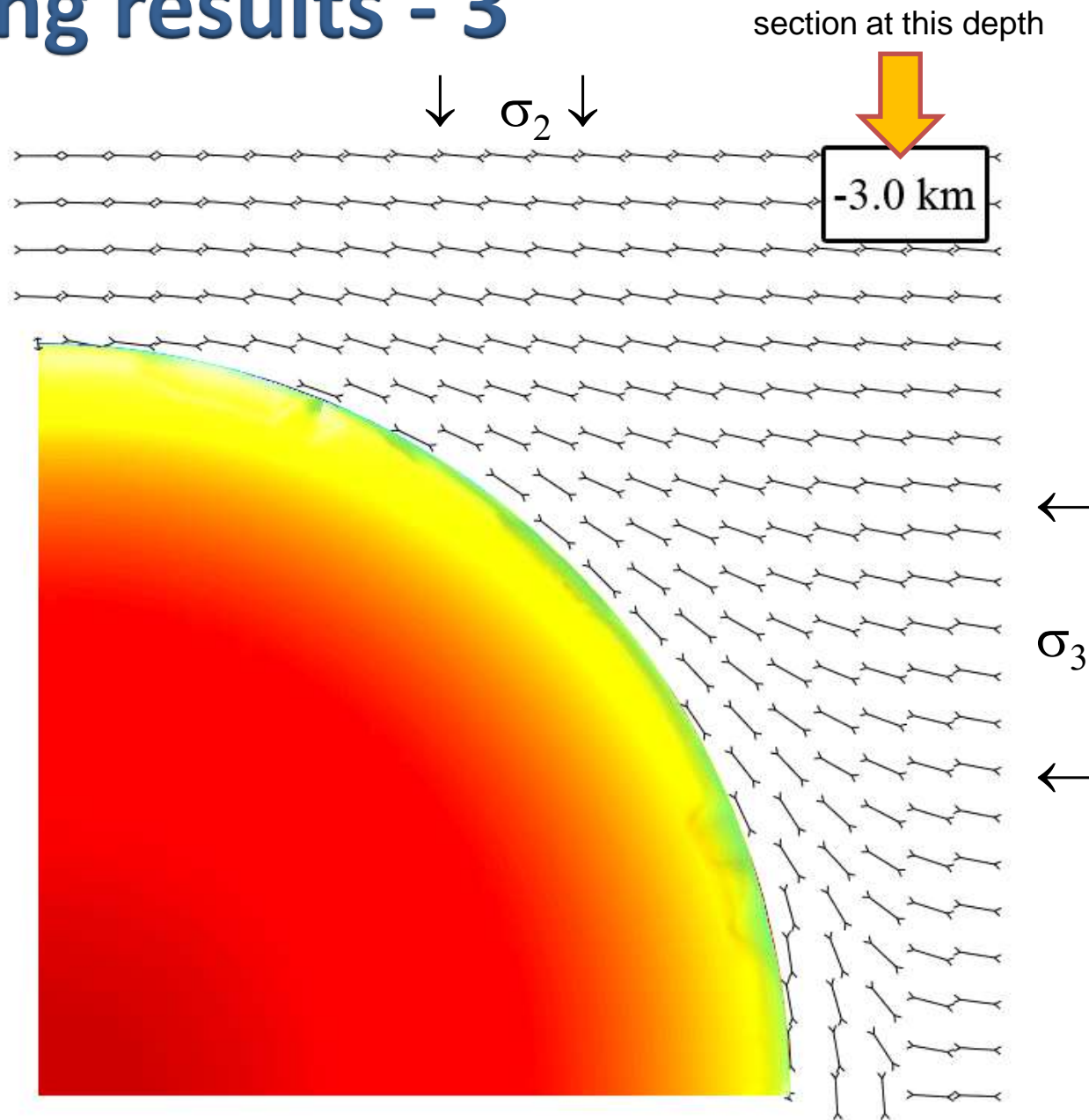
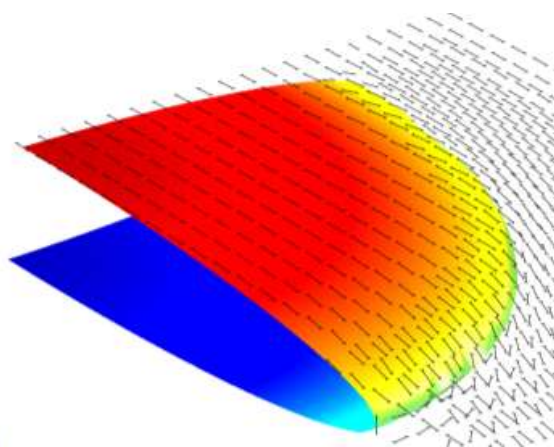
A modeling paradox? → Fieldwork on Skye → Conceptual model → FEM modeling → Conclusion

# FEM modeling results - 3

3D: oblate magma chamber seen from above, at increasingly deep slices; only  $\sigma_3$  is shown.

→ cone-sheets above magma chamber

→ parallel dykes after a threshold distance



[Static visualization is not really satisfying. If you are interested, I have 3D models on my laptop.]

A modeling paradox? → Fieldwork on Skye → Conceptual model → FEM modeling → Conclusion